

Product datasheet for **TA809693BM**

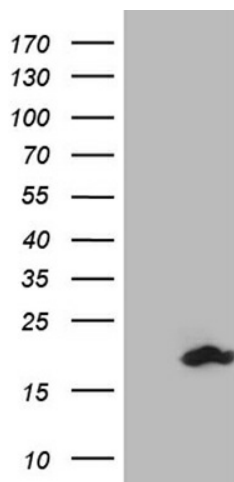
SDHAF1 Mouse Monoclonal Antibody (HRP conjugated) [Clone ID: OTI8C12]

Product data:

Product Type:	Primary Antibodies
Clone Name:	OTI8C12
Applications:	WB
Recommended Dilution:	WB 1:2000
Reactivity:	Human
Host:	Mouse
Isotype:	IgG2a
Clonality:	Monoclonal
Immunogen:	Full length human recombinant protein of human SDHAF1 (NP_001036096) produced in HEK293T.
Formulation:	PBS (pH 7.3) containing 1% BSA, 50% glycerol.
Concentration:	0.5 mg/ml
Purification:	Purified from mouse ascites fluids or tissue culture supernatant by affinity chromatography (protein A/G)
Conjugation:	HRP
Storage:	Store at -20°C as received.
Stability:	Stable for 12 months from date of receipt.
Gene Name:	succinate dehydrogenase complex assembly factor 1
Database Link:	NP_001036096 Entrez Gene 644096 Human A6NFY7
Background:	The succinate dehydrogenase (SDH) complex (or complex II) of the mitochondrial respiratory chain is composed of 4 individual subunits. The protein encoded by this gene resides in the mitochondria, and is essential for SDH assembly, but does not physically associate with the complex in vivo. Mutations in this gene are associated with SDH-defective infantile leukoencephalopathy (mitochondrial complex II deficiency). [provided by RefSeq, Mar 2010]
Synonyms:	LYRM8; MC2DN2



[View online »](#)

Product images:

HEK293T cells were transfected with the pCMV6-ENTRY control (Left lane) or pCMV6-ENTRY SDHAF1 ([RC216831], Right lane) cDNA for 48 hrs and lysed. Equivalent amounts of cell lysates (5 ug per lane) were separated by SDS-PAGE and immunoblotted with anti-SDHAF1 (1:2000).