

Product datasheet for **TA809678AM**

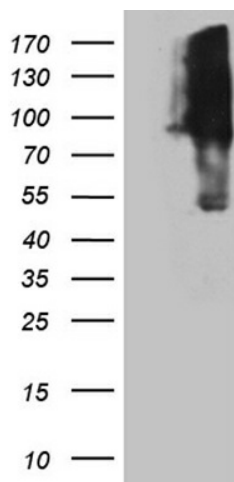
KIF9 Mouse Monoclonal Antibody (Biotin conjugated) [Clone ID: OTI1A2]

Product data:

Product Type:	Primary Antibodies
Clone Name:	OTI1A2
Applications:	WB
Recommended Dilution:	WB 1:2000
Reactivity:	Human, Mouse, Rat
Host:	Mouse
Isotype:	IgG1
Clonality:	Monoclonal
Immunogen:	Human recombinant protein fragment corresponding to amino acids 430-790 of human KIF9 (NP_878905) produced in E.coli.
Formulation:	PBS (pH 7.3) containing 1% BSA, 50% glycerol and 0.02% sodium azide.
Concentration:	0.5 mg/ml
Purification:	Purified from mouse ascites fluids or tissue culture supernatant by affinity chromatography (protein A/G)
Conjugation:	Biotin
Storage:	Store at -20°C as received.
Stability:	Stable for 12 months from date of receipt.
Predicted Protein Size:	89.8 kDa
Gene Name:	kinesin family member 9
Database Link:	NP_878905 Entrez Gene 16578 Mouse Entrez Gene 501059 Rat Entrez Gene 64147 Human Q9HAQ2
Synonyms:	MGC104186
Protein Families:	Druggable Genome



[View online »](#)

Product images:

HEK293T cells were transfected with the pCMV6-ENTRY control (Cat# [PS100001], Left lane) or pCMV6-ENTRY KIF9 (Cat# [RC206103], Right lane) cDNA for 48 hrs and lysed. Equivalent amounts of cell lysates (5 ug per lane) were separated by SDS-PAGE and immunoblotted with anti-KIF9 (Cat# [TA809678]). Positive lysates [LY405393] (100ug) and [LC405393] (20ug) can be purchased separately from OriGene.