

Product datasheet for **TA809676AM**

TCF12 Mouse Monoclonal Antibody (Biotin conjugated) [Clone ID: OTI4A7]

Product data:

Product Type:	Primary Antibodies
Clone Name:	OTI4A7
Applications:	IHC, WB
Recommended Dilution:	WB 1:500~2000, IHC 1:1000
Reactivity:	Human, Mouse, Rat
Host:	Mouse
Isotype:	IgG2a
Clonality:	Monoclonal
Immunogen:	Full length human recombinant protein of human TCF12 (NP_996919) produced in E.coli.
Formulation:	PBS (pH 7.3) containing 1% BSA, 50% glycerol and 0.02% sodium azide.
Concentration:	0.5 mg/ml
Purification:	Purified from mouse ascites fluids or tissue culture supernatant by affinity chromatography (protein A/G)
Conjugation:	Biotin
Storage:	Store at -20°C as received.
Stability:	Stable for 12 months from date of receipt.
Predicted Protein Size:	75.7 kDa
Gene Name:	transcription factor 12
Database Link:	NP_996919 Entrez Gene 21406 Mouse Entrez Gene 25720 Rat Entrez Gene 6938 Human Q99081
Background:	The protein encoded by this gene is a member of the basic helix-loop-helix (bHLH) E-protein family that recognizes the consensus binding site (E-box) CANNTG. This encoded protein is expressed in many tissues, among them skeletal muscle, thymus, B- and T-cells, and may participate in regulating lineage-specific gene expression through the formation of heterodimers with other bHLH E-proteins. Several alternatively spliced transcript variants of this gene have been described, but the full-length nature of some of these variants has not been determined. [provided by RefSeq, Jul 2008]

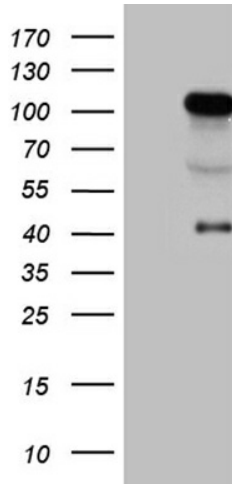


[View online »](#)

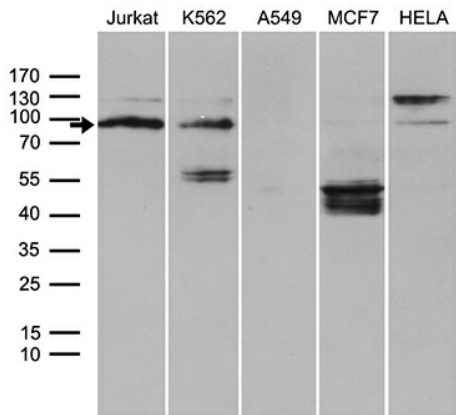
Synonyms: bHLHb20; CRS3; HEB; HsT17266; HTF4

Protein Families: Druggable Genome, Transcription Factors

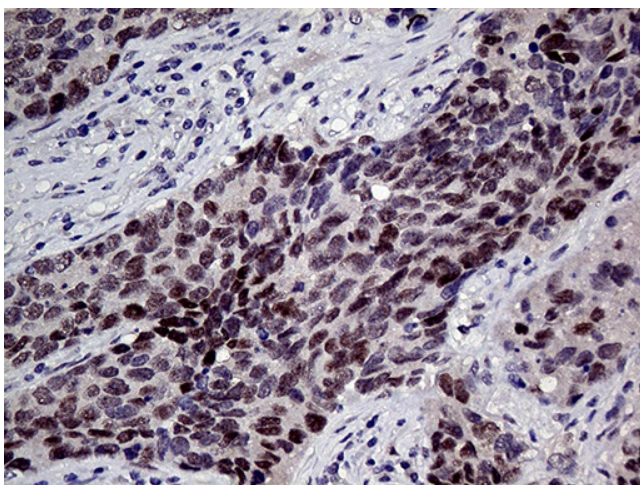
Product images:



HEK293T cells were transfected with the pCMV6-ENTRY control (Left lane) or pCMV6-ENTRY TCF12 ([RC220164], Right lane) cDNA for 48 hrs and lysed. Equivalent amounts of cell lysates (5 ug per lane) were separated by SDS-PAGE and immunoblotted with anti-TCF12 (1:2000). Positive lysates [LY403720] (100ug) and [LC403720] (20ug) can be purchased separately from OriGene.



Western blot analysis of extracts (35ug) from 5 different cell lines by using anti-TCF12 monoclonal antibody (1:500).



Immunohistochemical staining of paraffin-embedded Carcinoma of Human lung tissue using anti-TCF12 mouse monoclonal antibody. (Heat-induced epitope retrieval by 1mM EDTA in 10mM Tris buffer (pH8.5) at 120°C for 3min, [TA809676]) (1:1000)