

## Product datasheet for **TA809675**

### Eph receptor A1 (EPHA1) Mouse Monoclonal Antibody [Clone ID: OTI2D6]

#### Product data:

Product Type:	Primary Antibodies
Clone Name:	OTI2D6
Applications:	WB
Recommended Dilution:	WB 1:500
Reactivity:	Human, Mouse, Rat
Host:	Mouse
Isotype:	IgG2a
Clonality:	Monoclonal
Immunogen:	Human recombinant protein fragment corresponding to amino acids 24-327 of human EPHA1 (NP_005223) produced in E.coli.
Formulation:	PBS (pH 7.3) containing 1% BSA, 50% glycerol and 0.02% sodium azide.
Concentration:	1 mg/ml
Purification:	Purified from mouse ascites fluids or tissue culture supernatant by affinity chromatography (protein A/G)
Conjugation:	Unconjugated
Storage:	Store at -20°C as received.
Stability:	Stable for 12 months from date of receipt.
Predicted Protein Size:	107.9 kDa
Gene Name:	EPH receptor A1
Database Link:	<a href="#">NP_005223</a> <a href="#">Entrez Gene 13835 Mouse</a> <a href="#">Entrez Gene 312279 Rat</a> <a href="#">Entrez Gene 2041 Human</a> <a href="#">P21709</a>



[View online »](#)

**Background:**

This gene belongs to the ephrin receptor subfamily of the protein-tyrosine kinase family. EPH and EPH-related receptors have been implicated in mediating developmental events, particularly in the nervous system. Receptors in the EPH subfamily typically have a single kinase domain and an extracellular region containing a Cys-rich domain and 2 fibronectin type III repeats. The ephrin receptors are divided into 2 groups based on the similarity of their extracellular domain sequences and their affinities for binding ephrin-A and ephrin-B ligands. This gene is expressed in some human cancer cell lines and has been implicated in carcinogenesis. [provided by RefSeq, Jul 2008]

**Synonyms:**

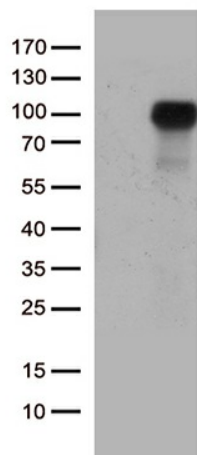
EPH; EPHT; EPHT1

**Protein Families:**

Druggable Genome, Protein Kinase, Transmembrane

**Protein Pathways:**

Axon guidance

**Product images:**

HEK293T cells were transfected with the pCMV6-ENTRY control (Left lane) or pCMV6-ENTRY EPHA1 ([RC213689], Right lane) cDNA for 48 hrs and lysed. Equivalent amounts of cell lysates (5 ug per lane) were separated by SDS-PAGE and immunoblotted with anti-EPHA1 (1:500). Positive lysates [LY401608] (100ug) and [LC401608] (20ug) can be purchased separately from OriGene.