

## Product datasheet for **TA809670M**

### **PITX2 Mouse Monoclonal Antibody [Clone ID: OTI1H10]**

#### **Product data:**

Product Type:	Primary Antibodies
Clone Name:	OTI1H10
Applications:	WB
Recommended Dilution:	WB 1:2000
Reactivity:	Human, Mouse, Rat
Host:	Mouse
Isotype:	IgG1
Clonality:	Monoclonal
Immunogen:	Human recombinant protein fragment corresponding to amino acids 1-200 of human PITX2 (NP_700475) produced in E.coli.
Formulation:	PBS (pH 7.3) containing 1% BSA, 50% glycerol and 0.02% sodium azide.
Concentration:	1 mg/ml
Purification:	Purified from mouse ascites fluids or tissue culture supernatant by affinity chromatography (protein A/G)
Conjugation:	Unconjugated
Storage:	Store at -20°C as received.
Stability:	Stable for 12 months from date of receipt.
Predicted Protein Size:	35.2 kDa
Gene Name:	paired like homeodomain 2
Database Link:	<a href="#">NP_700475</a> <a href="#">Entrez Gene 18741 Mouse</a> <a href="#">Entrez Gene 54284 Rat</a> <a href="#">Entrez Gene 5308 Human</a> <a href="#">Q99697</a>


[View online »](#)

**Background:**

This gene encodes a member of the RIEG/PITX homeobox family, which is in the bicoid class of homeodomain proteins. The encoded protein acts as a transcription factor and regulates procollagen lysyl hydroxylase gene expression. This protein plays a role in the terminal differentiation of somatotroph and lactotroph cell phenotypes, is involved in the development of the eye, tooth and abdominal organs, and acts as a transcriptional regulator involved in basal and hormone-regulated activity of prolactin. Mutations in this gene are associated with Axenfeld-Rieger syndrome, iridogoniodysgenesis syndrome, and sporadic cases of Peters anomaly. A similar protein in other vertebrates is involved in the determination of left-right asymmetry during development. Alternatively spliced transcript variants encoding distinct isoforms have been described. [provided by RefSeq, Jul 2008]

**Synonyms:**

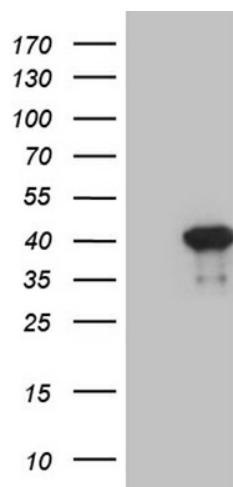
ARP1; Brx1; IDG2; IGDS; IGDS2; IHG2; IRID2; Otlx2; PTX2; RGS; RIEG; RIEG1; RS

**Protein Families:**

Transcription Factors

**Protein Pathways:**

TGF-beta signaling pathway

**Product images:**


HEK293T cells were transfected with the pCMV6-ENTRY control (Cat# [PS100001], Left lane) or pCMV6-ENTRY PITX2 (Cat# [RC213218], Right lane) cDNA for 48 hrs and lysed. Equivalent amounts of cell lysates (5 ug per lane) were separated by SDS-PAGE and immunoblotted with anti-PITX2 (Cat# [TA809670])(1:2000). Positive lysates [LY407091] (100ug) and [LC407091] (20ug) can be purchased separately from OriGene.