

## Product datasheet for **TA809668S**

### TCF12 Mouse Monoclonal Antibody [Clone ID: OTI4B5]

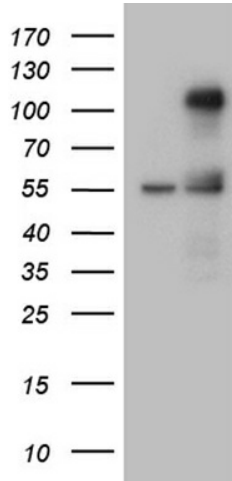
#### Product data:

Product Type:	Primary Antibodies
Clone Name:	OTI4B5
Applications:	WB
Recommended Dilution:	WB 1:500~2000
Reactivity:	Human, Mouse, Rat
Host:	Mouse
Isotype:	IgG2b
Clonality:	Monoclonal
Immunogen:	Full length human recombinant protein of human TCF12 (NP_996919) produced in E.coli.
Formulation:	PBS (pH 7.3) containing 1% BSA, 50% glycerol and 0.02% sodium azide.
Concentration:	1 mg/ml
Purification:	Purified from mouse ascites fluids or tissue culture supernatant by affinity chromatography (protein A/G)
Conjugation:	Unconjugated
Storage:	Store at -20°C as received.
Stability:	Stable for 12 months from date of receipt.
Predicted Protein Size:	75.7 kDa
Gene Name:	transcription factor 12
Database Link:	<a href="#">NP_996919</a> <a href="#">Entrez Gene 21406 Mouse</a> <a href="#">Entrez Gene 25720 Rat</a> <a href="#">Entrez Gene 6938 Human</a> <a href="#">Q99081</a>
Synonyms:	bHLHb20; CRS3; HEB; HsT17266; HTF4
Protein Families:	Druggable Genome, Transcription Factors

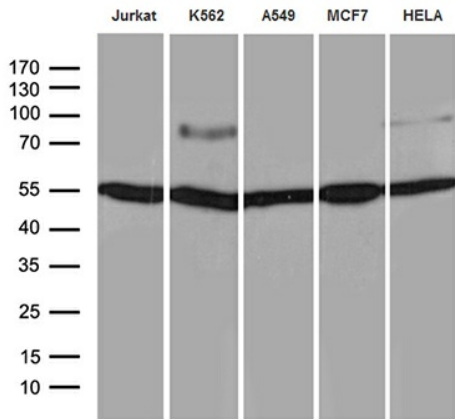


[View online »](#)

**Product images:**



HEK293T cells were transfected with the pCMV6-ENTRY control (Left lane) or pCMV6-ENTRY TCF12 ([RC220164], Right lane) cDNA for 48 hrs and lysed. Equivalent amounts of cell lysates (5 ug per lane) were separated by SDS-PAGE and immunoblotted with anti-TCF12 (1:2000). Positive lysates [LY403720] (100ug) and [LC403720] (20ug) can be purchased separately from OriGene.



Western blot analysis of extracts (35ug) from 5 different cell lines by using anti-TCF12 monoclonal antibody (1:500).