

Product datasheet for **TA809662AM**

FRA2 (FOSL2) Mouse Monoclonal Antibody (Biotin conjugated) [Clone ID: OTI1G2]

Product data:

Product Type:	Primary Antibodies
Clone Name:	OTI1G2
Applications:	WB
Recommended Dilution:	WB 1:2000
Reactivity:	Human, Mouse, Rat
Host:	Mouse
Isotype:	IgG1
Clonality:	Monoclonal
Immunogen:	Human recombinant protein fragment corresponding to amino acids 110-326 of human FOSL2 (NP_005244) produced in E.coli.
Formulation:	PBS (pH 7.3) containing 1% BSA, 50% glycerol and 0.02% sodium azide.
Concentration:	0.5 mg/ml
Purification:	Purified from mouse ascites fluids or tissue culture supernatant by affinity chromatography (protein A/G)
Conjugation:	Biotin
Storage:	Store at -20°C as received.
Stability:	Stable for 12 months from date of receipt.
Predicted Protein Size:	35 kDa
Gene Name:	FOS like 2, AP-1 transcription factor subunit
Database Link:	NP_005244 Entrez Gene 14284 Mouse Entrez Gene 25446 Rat Entrez Gene 2355 Human P15408
Background:	The Fos gene family consists of 4 members: FOS, FOSB, FOSL1, and FOSL2. These genes encode leucine zipper proteins that can dimerize with proteins of the JUN family, thereby forming the transcription factor complex AP-1. As such, the FOS proteins have been implicated as regulators of cell proliferation, differentiation, and transformation. [provided by RefSeq, Jul 2014]

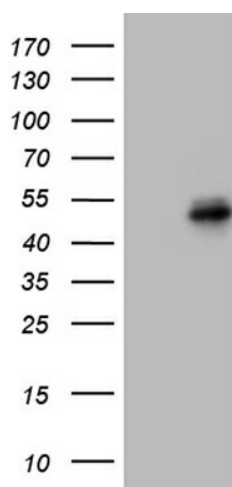


[View online »](#)

Synonyms: FRA2

Protein Families: Druggable Genome, Transcription Factors

Product images:



HEK293T cells were transfected with the pCMV6-ENTRY control (Left lane) or pCMV6-ENTRY FOSL2 ([RC204146], Right lane) cDNA for 48 hrs and lysed. Equivalent amounts of cell lysates (5 ug per lane) were separated by SDS-PAGE and immunoblotted with anti-FOSL2 (1:2000). Positive lysates [LY417421] (100ug) and [LC417421] (20ug) can be purchased separately from OriGene.