

## Product datasheet for **TA809653**

### HEAB (CLP1) Mouse Monoclonal Antibody [Clone ID: OTI1H7]

#### Product data:

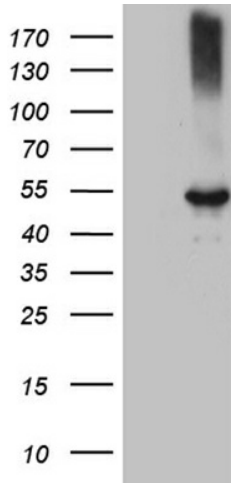
Product Type:	Primary Antibodies
Clone Name:	OTI1H7
Applications:	WB
Recommended Dilution:	WB 1:500~2000
Reactivity:	Human, Rat, Mouse
Host:	Mouse
Isotype:	IgG1
Clonality:	Monoclonal
Immunogen:	Human recombinant protein fragment corresponding to amino acids 1-226 of human CLP1 (NP_006822) produced in E.coli.
Formulation:	PBS (pH 7.3) containing 1% BSA, 50% glycerol and 0.02% sodium azide.
Concentration:	1 mg/ml
Purification:	Purified from mouse ascites fluids or tissue culture supernatant by affinity chromatography (protein A/G)
Conjugation:	Unconjugated
Storage:	Store at -20°C as received.
Stability:	Stable for 12 months from date of receipt.
Predicted Protein Size:	47.5 kDa
Gene Name:	cleavage and polyadenylation factor I subunit 1
Database Link:	<a href="#">NP_006822</a> <a href="#">Entrez Gene 311166 Rat</a> <a href="#">Entrez Gene 10978 Human</a> <a href="#">Q92989</a>
Background:	This gene encodes a member of the Clp1 family. The encoded protein is a multifunctional kinase which is a component of the tRNA splicing endonuclease complex and a component of the pre-mRNA cleavage complex II. This protein is implicated in tRNA, mRNA, and siRNA maturation. Mutations in this gene are associated with pontocerebellar hypoplasia type 10 (PCH10). Alternatively splice transcript variants encoding different isoforms have been found for this gene. [provided by RefSeq, Sep 2014]



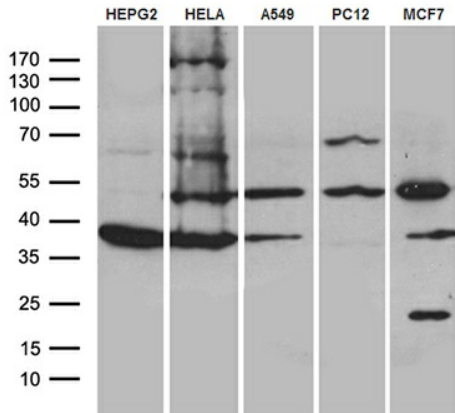
[View online »](#)

Synonyms: hClp1; HEAB

**Product images:**



HEK293T cells were transfected with the pCMV6-ENTRY control (Cat# [PS100001], Left lane) or pCMV6-ENTRY CLP1 (Cat# [RC201772], Right lane) cDNA for 48 hrs and lysed. Equivalent amounts of cell lysates (5 ug per lane) were separated by SDS-PAGE and immunoblotted with anti-CLP1 (Cat# TA809653). Positive lysates [LY402047] (100ug) and [LC402047] (20ug) can be purchased separately from OriGene.



Western blot analysis of extracts (35ug) from 5 cell lines by using anti-CLP1 monoclonal antibody (1:500).