

Product datasheet for **TA809631BM**

Clathrin light chain (CLTA) Mouse Monoclonal Antibody (HRP conjugated) [Clone ID: OTI2A6]

Product data:

Product Type:	Primary Antibodies
Clone Name:	OTI2A6
Applications:	IHC, WB
Recommended Dilution:	WB 1:500~2000, IHC 1:500
Reactivity:	Human, Mouse, Rat
Host:	Mouse
Isotype:	IgG1
Clonality:	Monoclonal
Immunogen:	Full length human recombinant protein of human CLTA(NP_001824) produced in E.coli.
Formulation:	PBS (pH 7.3) containing 1% BSA, 50% glycerol.
Concentration:	0.5 mg/ml
Purification:	Purified from mouse ascites fluids or tissue culture supernatant by affinity chromatography (protein A/G)
Conjugation:	HRP
Storage:	Store at -20°C as received.
Stability:	Stable for 12 months from date of receipt.
Predicted Protein Size:	23.5 kDa
Gene Name:	clathrin light chain A
Database Link:	NP_001824 Entrez Gene 12757 Mouse Entrez Gene 83800 Rat Entrez Gene 1211 Human P09496

Background: Clathrin is a large, soluble protein composed of heavy and light chains. It functions as the main structural component of the lattice-type cytoplasmic face of coated pits and vesicles which entrap specific macromolecules during receptor-mediated endocytosis. This gene encodes one of two clathrin light chain proteins which are believed to function as regulatory elements. Alternative splicing results in multiple transcript variants. Related pseudogenes have been identified on chromosomes 8 and 12. [provided by RefSeq, May 2010]

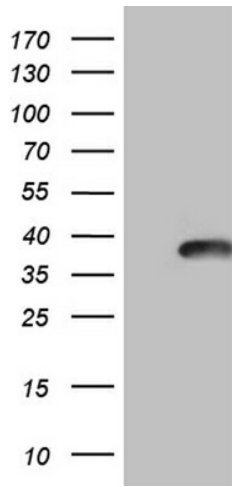


[View online »](#)

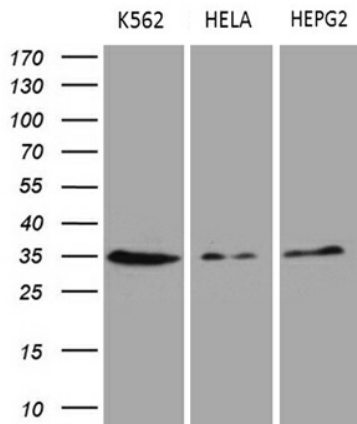
Synonyms: LCA

Protein Pathways: Endocytosis, Huntington's disease, Lysosome

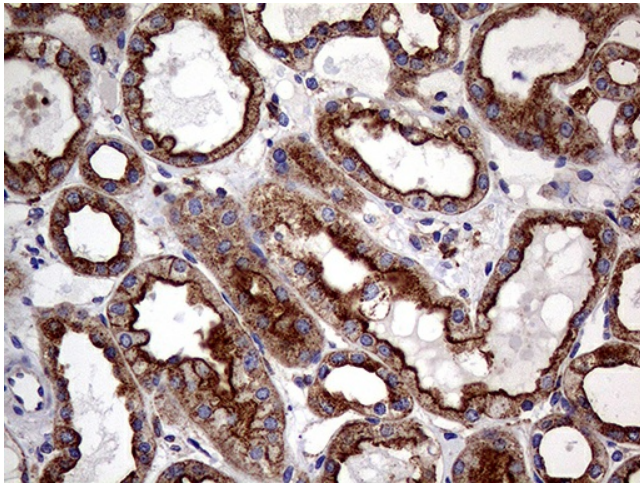
Product images:



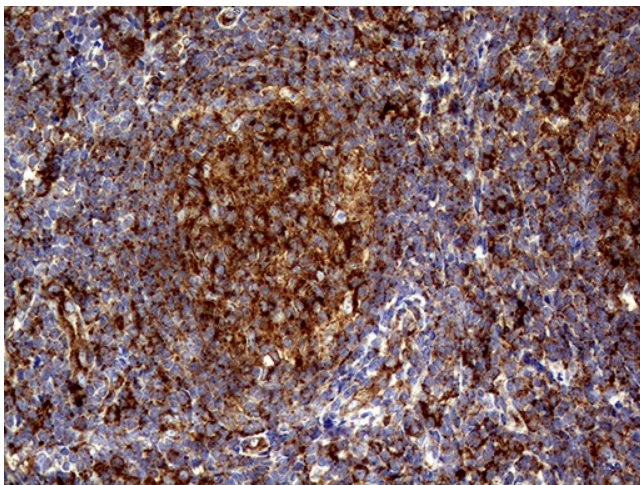
HEK293T cells were transfected with the pCMV6-ENTRY control (Left lane) or pCMV6-ENTRY CLTA ([RC203505], Right lane) cDNA for 48 hrs and lysed. Equivalent amounts of cell lysates (5 ug per lane) were separated by SDS-PAGE and immunoblotted with anti-CLTA (1:2000) ([TA809631]). Positive lysates [LY400696] (100ug) and [LC400696] (20ug) can be purchased separately from OriGene.



Western blot analysis of extracts (35ug) from 3 different cell lines by using anti-CLTA monoclonal antibody (1:500).



Immunohistochemical staining of paraffin-embedded Human Kidney tissue within the normal limits using anti-CLTA mouse monoclonal antibody. (Heat-induced epitope retrieval by 1mM EDTA in 10mM Tris buffer (pH8.5) at 120°C for 3min, [TA809631]) (1:500)



Immunohistochemical staining of paraffin-embedded Human lymph node tissue within the normal limits using anti-CLTA mouse monoclonal antibody. (Heat-induced epitope retrieval by 1mM EDTA in 10mM Tris buffer (pH8.5) at 120°C for 3min, [TA809631]) (1:500)