

## Product datasheet for **TA809624AM**

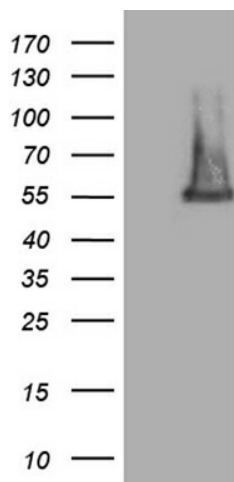
### **FAM170A Mouse Monoclonal Antibody (Biotin conjugated) [Clone ID: OTI6E4]**

#### **Product data:**

Product Type:	Primary Antibodies
Clone Name:	OTI6E4
Applications:	WB
Recommended Dilution:	WB 1:2000
Reactivity:	Human
Host:	Mouse
Isotype:	IgG1
Clonality:	Monoclonal
Immunogen:	Full length human recombinant protein of human FAM170A(NP_877438) produced in E.coli.
Formulation:	PBS (pH 7.3) containing 1% BSA, 50% glycerol and 0.02% sodium azide.
Concentration:	0.5 mg/ml
Purification:	Purified from mouse ascites fluids or tissue culture supernatant by affinity chromatography (protein A/G)
Conjugation:	Biotin
Storage:	Store at -20°C as received.
Stability:	Stable for 12 months from date of receipt.
Predicted Protein Size:	36.9 kDa
Gene Name:	family with sequence similarity 170 member A
Database Link:	<a href="#">NP_877438</a> <a href="#">Entrez Gene 340069 Human</a> <a href="#">A1A519</a>
Synonyms:	ZNFD



[View online »](#)

**Product images:**


HEK293T cells were transfected with the pCMV6-ENTRY control (Cat# [PS100001], Left lane) or pCMV6-ENTRY FAM170A (Cat# [RC219166], Right lane) cDNA for 48 hrs and lysed. Equivalent amounts of cell lysates (5 ug per lane) were separated by SDS-PAGE and immunoblotted with anti-FAM170A (Cat# [TA809624])(1:2000). Positive lysates [LY405332] (100ug) and [LC405332] (20ug) can be purchased separately from OriGene.