

## Product datasheet for **TA809618S**

### MEIS1 Mouse Monoclonal Antibody [Clone ID: OTI3G8]

#### Product data:

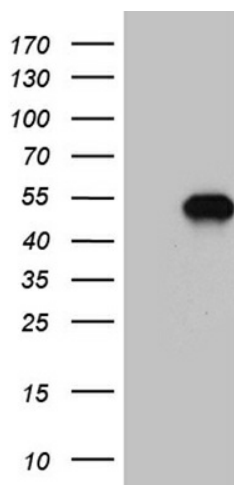
Product Type:	Primary Antibodies
Clone Name:	OTI3G8
Applications:	IHC, WB
Recommended Dilution:	WB 1:500~2000, IHC 1:500
Reactivity:	Human
Host:	Mouse
Isotype:	IgG1
Clonality:	Monoclonal
Immunogen:	Human recombinant protein fragment corresponding to amino acids 176-390 of human MEIS1 (NP_002389) produced in E.coli.
Formulation:	PBS (pH 7.3) containing 1% BSA, 50% glycerol and 0.02% sodium azide.
Concentration:	1 mg/ml
Purification:	Purified from mouse ascites fluids or tissue culture supernatant by affinity chromatography (protein A/G)
Conjugation:	Unconjugated
Storage:	Store at -20°C as received.
Stability:	Stable for 12 months from date of receipt.
Gene Name:	Meis homeobox 1
Database Link:	<a href="#">NP_002389</a> <a href="#">Entrez Gene 4211 Human</a> <a href="#">O00470</a>
Background:	Homeobox genes, of which the most well-characterized category is represented by the HOX genes, play a crucial role in normal development. In addition, several homeoproteins are involved in neoplasia. This gene encodes a homeobox protein belonging to the TALE ('three amino acid loop extension') family of homeodomain-containing proteins. [provided by RefSeq, Jul 2008]
Synonyms:	MGC43380



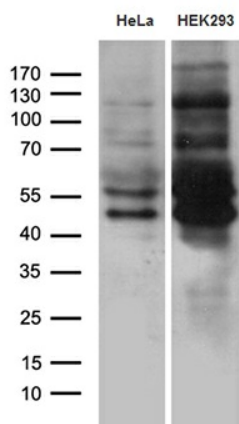
[View online »](#)

Protein Families: Transcription Factors

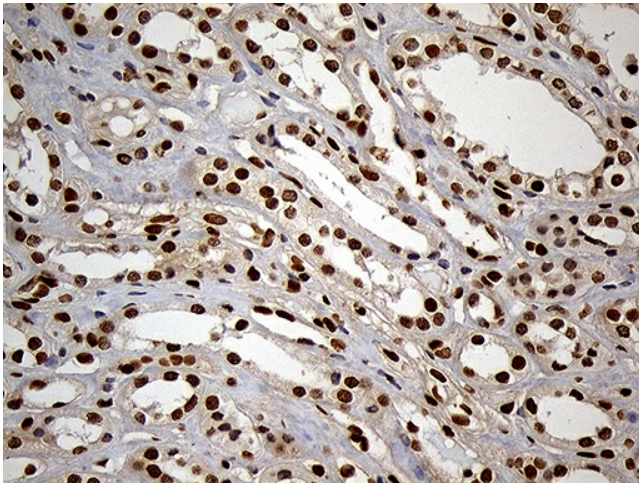
### Product images:



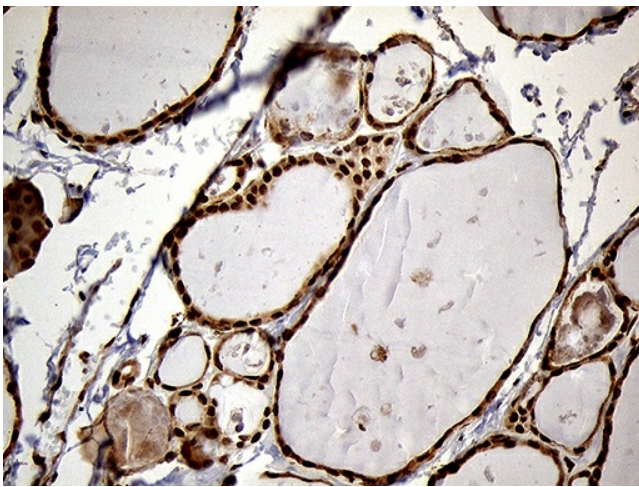
HEK293T cells were transfected with the pCMV6-ENTRY control (Left lane) or pCMV6-ENTRY MEIS1 ([SC118668], Right lane) cDNA for 48 hrs and lysed. Equivalent amounts of cell lysates (5 ug per lane) were separated by SDS-PAGE and immunoblotted with anti-MEIS1 (1:2000).



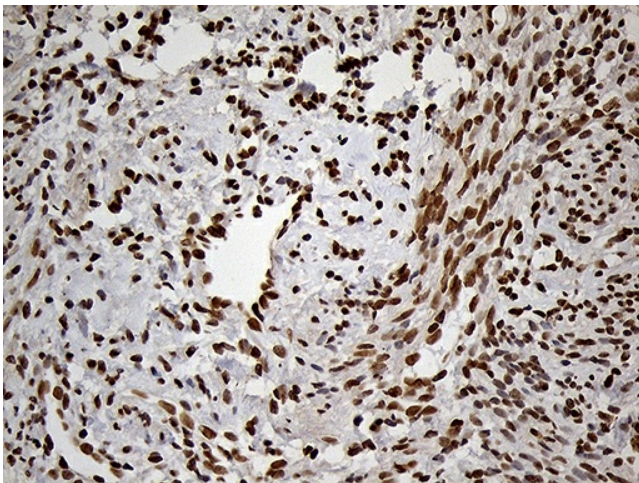
Western blot analysis of extracts (35ug) from 2 different cell lines by using anti-MEIS1 monoclonal antibody (1:500).



Immunohistochemical staining of paraffin-embedded Human Kidney tissue within the normal limits using anti-MEIS1 mouse monoclonal antibody. (Heat-induced epitope retrieval by 1mM EDTA in 10mM Tris buffer (pH8.5) at 120°C for 3min, [TA809618]) (1:500)



Immunohistochemical staining of paraffin-embedded Human thyroid tissue within the normal limits using anti-MEIS1 mouse monoclonal antibody. (Heat-induced epitope retrieval by 1mM EDTA in 10mM Tris buffer (pH8.5) at 120°C for 3min, [TA809618]) (1:500)



Immunohistochemical staining of paraffin-embedded Human endometrium tissue within the normal limits using anti-MEIS1 mouse monoclonal antibody. (Heat-induced epitope retrieval by 1mM EDTA in 10mM Tris buffer (pH8.5) at 120°C for 3min, [TA809618]) (1:500)