

## Product datasheet for **TA809613**

### ANP32C Mouse Monoclonal Antibody [Clone ID: OTI10A10]

#### Product data:

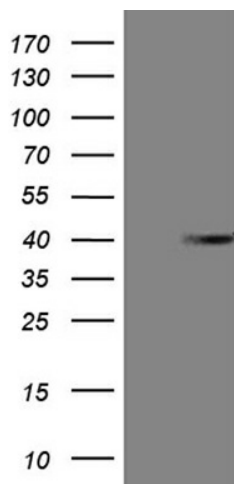
Product Type:	Primary Antibodies
Clone Name:	OTI10A10
Applications:	FC, IHC, WB
Recommended Dilution:	WB 1:2000, IHC 1:2000
Reactivity:	Human
Host:	Mouse
Isotype:	IgG2a
Clonality:	Monoclonal
Immunogen:	Full length human recombinant protein of human ANP32C(NP_036535) produced in E.coli.
Formulation:	PBS (pH 7.3) containing 1% BSA, 50% glycerol and 0.02% sodium azide.
Concentration:	1 mg/ml
Purification:	Purified from mouse ascites fluids or tissue culture supernatant by affinity chromatography (protein A/G)
Conjugation:	Unconjugated
Storage:	Store at -20°C as received.
Stability:	Stable for 12 months from date of receipt.
Predicted Protein Size:	26.6 kDa
Gene Name:	acidic nuclear phosphoprotein 32 family member C
Database Link:	<a href="#">NP_036535</a> <a href="#">Entrez Gene 23520 Human</a> <a href="#">O43423</a>
Background:	Phosphoprotein 32 (PP32) is a tumor suppressor that can inhibit several types of cancers, including prostate and breast cancers. The protein encoded by this gene is one of at least two proteins that are similar in amino acid sequence to PP32 and are part of the same acidic nuclear phosphoprotein gene family. However, unlike PP32, the encoded protein is tumorigenic. The tumor suppressor function of PP32 has been localized to a 25 amino acid region that is divergent between PP32 and the protein encoded by this gene. This gene does not contain introns. [provided by RefSeq, Jul 2008]



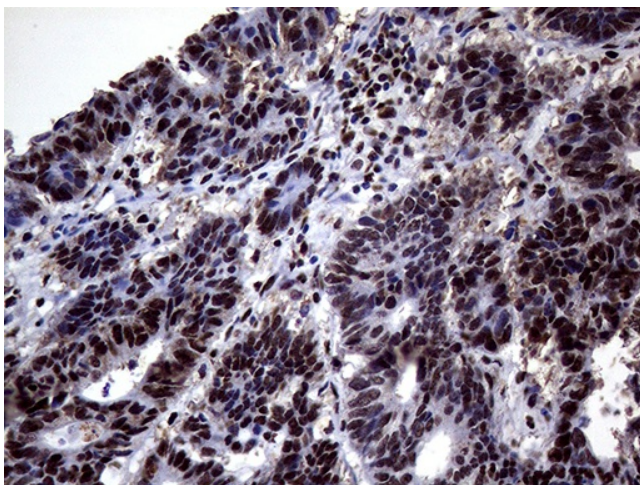
[View online »](#)

Synonyms: PP32R1

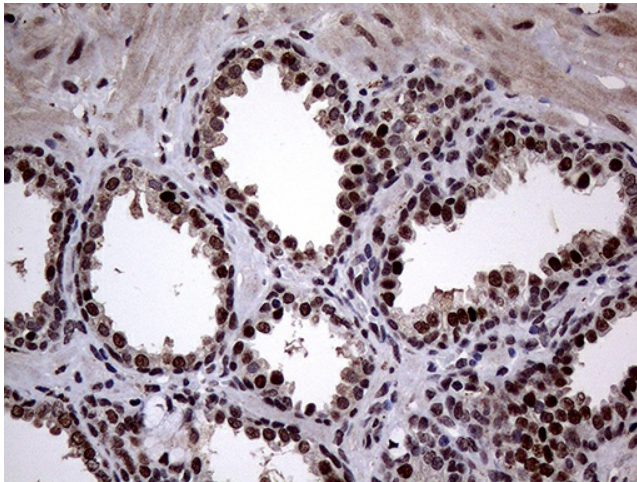
### Product images:



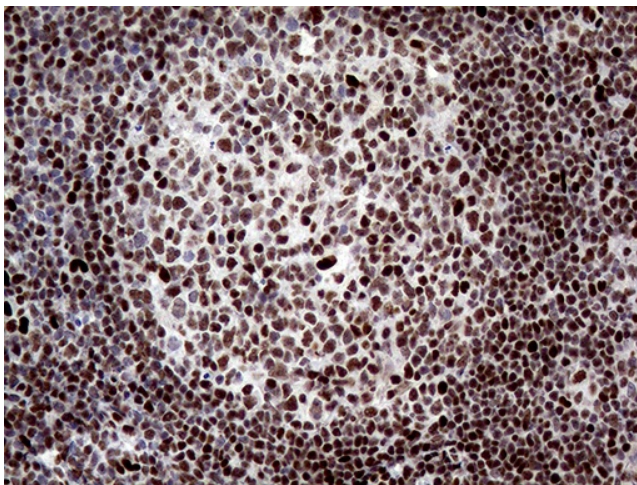
HEK293T cells were transfected with the pCMV6-ENTRY control (Cat# [PS100001], Left lane) or pCMV6-ENTRY ANP32C (Cat# [RC215880], Right lane) cDNA for 48 hrs and lysed. Equivalent amounts of cell lysates (5 ug per lane) were separated by SDS-PAGE and immunoblotted with anti-ANP32C (Cat# TA809613)(1:2000). Positive lysates [LY415781] (100ug) and [LC415781] (20ug) can be purchased separately from OriGene.



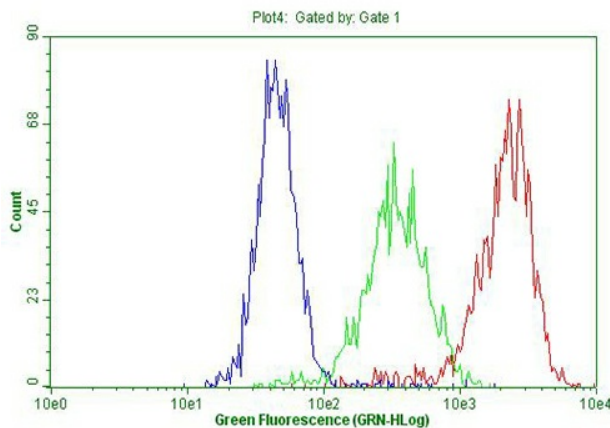
Immunohistochemical staining of paraffin-embedded Adenocarcinoma of Human colon tissue using anti-ANP32C mouse monoclonal antibody. (Heat-induced epitope retrieval by 1mM EDTA in 10mM Tris buffer (pH8.5) at 120°C for 3min, TA809613) (1:2000)



Immunohistochemical staining of paraffin-embedded Human prostate tissue within the normal limits using anti-ANP32C mouse monoclonal antibody. (Heat-induced epitope retrieval by 1mM EDTA in 10mM Tris buffer (pH8.5) at 120°C for 3min, TA809613) (1:2000)



Immunohistochemical staining of paraffin-embedded Human lymph node tissue within the normal limits using anti-ANP32C mouse monoclonal antibody. (Heat-induced epitope retrieval by 1mM EDTA in 10mM Tris buffer (pH8.5) at 120°C for 3min, TA809613) (1:2000)



Flow cytometric Analysis of permeabilized MCF-7 cells, using anti-ANP32C antibody (TA809613, Red), compared to an IgG isotype control (green), and negative control (PBS, Blue) (1:100).