

## Product datasheet for **TA809589AM**

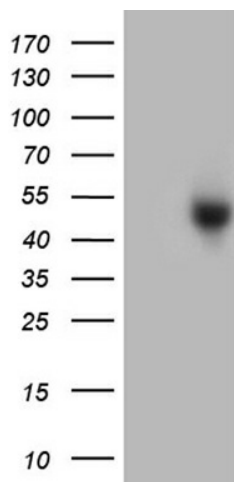
### ZCWPW2 Mouse Monoclonal Antibody (Biotin conjugated) [Clone ID: OTI10A12]

#### Product data:

Product Type:	Primary Antibodies
Clone Name:	OTI10A12
Applications:	WB
Recommended Dilution:	WB 1:2000
Reactivity:	Human
Host:	Mouse
Isotype:	IgG1
Clonality:	Monoclonal
Immunogen:	Full length human recombinant protein of human ZCWPW2 (NP_001035522) produced in E.coli.
Formulation:	PBS (pH 7.3) containing 1% BSA, 50% glycerol and 0.02% sodium azide.
Concentration:	0.5 mg/ml
Purification:	Purified from mouse ascites fluids or tissue culture supernatant by affinity chromatography (protein A/G)
Conjugation:	Biotin
Storage:	Store at -20°C as received.
Stability:	Stable for 12 months from date of receipt.
Predicted Protein Size:	41.2 kDa
Gene Name:	zinc finger CW-type and PWWP domain containing 2
Database Link:	<a href="#">NP_001035522</a> <a href="#">Entrez Gene 152098 Human</a> <a href="#">Q504Y3</a>
Synonyms:	ZCW2



[View online »](#)

**Product images:**

HEK293T cells were transfected with the pCMV6-ENTRY control (Cat# [PS100001], Left lane) or pCMV6-ENTRY ZCWPW2 (Cat# [RC220757], Right lane) cDNA for 48 hrs and lysed. Equivalent amounts of cell lysates (5 ug per lane) were separated by SDS-PAGE and immunoblotted with anti-ZCWPW2 (Cat# [TA809589])(1:2000). Positive lysates [LY421752] (100ug) and [LC421752] (20ug) can be purchased separately from OriGene.