

## Product datasheet for **TA809576**

### **BCL7B Mouse Monoclonal Antibody [Clone ID: OT18E10]**

#### **Product data:**

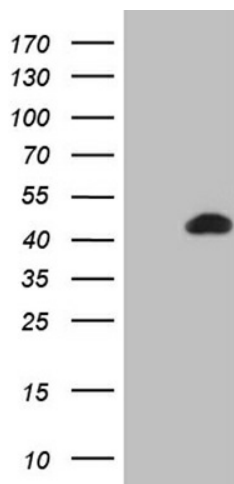
Product Type:	Primary Antibodies
Clone Name:	OT18E10
Applications:	WB
Recommended Dilution:	WB 1:2000
Reactivity:	Human, Mouse
Host:	Mouse
Isotype:	IgG1
Clonality:	Monoclonal
Immunogen:	Full length human recombinant protein of human BCL7B (NP_001698) produced in E.coli.
Formulation:	PBS (pH 7.3) containing 1% BSA, 50% glycerol and 0.02% sodium azide.
Concentration:	1 mg/ml
Purification:	Purified from mouse ascites fluids or tissue culture supernatant by affinity chromatography (protein A/G)
Conjugation:	Unconjugated
Storage:	Store at -20°C as received.
Stability:	Stable for 12 months from date of receipt.
Predicted Protein Size:	22 kDa
Gene Name:	B-cell CLL/lymphoma 7B
Database Link:	<a href="#">NP_001698</a> <a href="#">Entrez Gene 9275 Human</a> <a href="#">Q9BQE9</a>
Background:	This gene encodes a member of the BCL7 family including BCL7A, BCL7B and BCL7C proteins. This member is BCL7B, which contains a region that is highly similar to the N-terminal segment of BCL7A or BCL7C proteins. The BCL7A protein is encoded by the gene known to be directly involved in a three-way gene translocation in a Burkitt lymphoma cell line. This gene is located at a chromosomal region commonly deleted in Williams syndrome. This gene is highly conserved from C. elegans to human. Multiple alternatively spliced transcript variants have been found for this gene. [provided by RefSeq, Oct 2010]



[View online »](#)

Synonyms: B-cell CLL; lymphoma 7B; OTTHUMP00000025030

### Product images:



HEK293T cells were transfected with the pCMV6-ENTRY control (Left lane) or pCMV6-ENTRY BCL7B ([RC201696], Right lane) cDNA for 48 hrs and lysed. Equivalent amounts of cell lysates (5 ug per lane) were separated by SDS-PAGE and immunoblotted with anti-BCL7B (1:2000). Positive lysates [LY419788] (100ug) and [LC419788] (20ug) can be purchased separately from OriGene.