

## Product datasheet for **TA809571S**

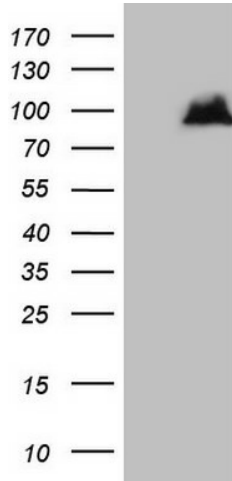
### ATG16L1 Mouse Monoclonal Antibody [Clone ID: OTI2A10]

#### Product data:

Product Type:	Primary Antibodies
Clone Name:	OTI2A10
Applications:	WB
Recommended Dilution:	WB 1:2000
Reactivity:	Human, Mouse, Rat
Host:	Mouse
Isotype:	IgG1
Clonality:	Monoclonal
Immunogen:	Human recombinant protein fragment corresponding to amino acids 1-277 of human ATG16L (NP_110430) produced in E.coli.
Formulation:	PBS (pH 7.3) containing 1% BSA, 50% glycerol and 0.02% sodium azide.
Concentration:	1 mg/ml
Purification:	Purified from mouse ascites fluids or tissue culture supernatant by affinity chromatography (protein A/G)
Conjugation:	Unconjugated
Storage:	Store at -20°C as received.
Stability:	Stable for 12 months from date of receipt.
Gene Name:	autophagy related 16 like 1
Database Link:	<a href="#">NP_110430</a> <a href="#">Entrez Gene 77040 Mouse</a> <a href="#">Entrez Gene 363278 Rat</a> <a href="#">Entrez Gene 55054 Human</a> <a href="#">Q676U5</a>
Background:	The protein encoded by this gene is part of a large protein complex that is necessary for autophagy, the major process by which intracellular components are targeted to lysosomes for degradation. Defects in this gene are a cause of susceptibility to inflammatory bowel disease type 10 (IBD10). Several transcript variants encoding different isoforms have been found for this gene. [provided by RefSeq, Jun 2010]
Synonyms:	APG16L; ATG16A; ATG16L; IBD10; WDR30



[View online »](#)

**Product images:**

HEK293T cells were transfected with the pCMV6-ENTRY control (Left lane) or pCMV6-ENTRY ATG16L1 ([RC216728], Right lane) cDNA for 48 hrs and lysed. Equivalent amounts of cell lysates (5 ug per lane) were separated by SDS-PAGE and immunoblotted with anti-ATG16L1 (1:2000). Positive lysates [LY410699] (100ug) and [LC410699] (20ug) can be purchased separately from OriGene.