

## Product datasheet for **TA809571BM**

### **ATG16L1 Mouse Monoclonal Antibody (HRP conjugated) [Clone ID: OTI2A10]**

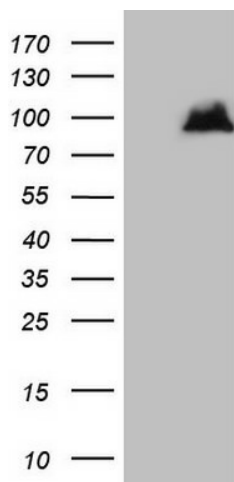
#### **Product data:**

<b>Product Type:</b>	Primary Antibodies
<b>Clone Name:</b>	OTI2A10
<b>Applications:</b>	WB
<b>Recommended Dilution:</b>	WB 1:2000
<b>Reactivity:</b>	Human, Mouse, Rat
<b>Host:</b>	Mouse
<b>Isotype:</b>	IgG1
<b>Clonality:</b>	Monoclonal
<b>Immunogen:</b>	Human recombinant protein fragment corresponding to amino acids 1-277 of human ATG16L (NP_110430) produced in E.coli.
<b>Formulation:</b>	PBS (pH 7.3) containing 1% BSA, 50% glycerol.
<b>Concentration:</b>	0.5 mg/ml
<b>Purification:</b>	Purified from mouse ascites fluids or tissue culture supernatant by affinity chromatography (protein A/G)
<b>Conjugation:</b>	HRP
<b>Storage:</b>	Store at -20°C as received.
<b>Stability:</b>	Stable for 12 months from date of receipt.
<b>Gene Name:</b>	autophagy related 16 like 1
<b>Database Link:</b>	<a href="#">NP_110430</a> <a href="#">Entrez Gene 77040 Mouse</a> <a href="#">Entrez Gene 363278 Rat</a> <a href="#">Entrez Gene 55054 Human</a> <a href="#">Q676U5</a>
<b>Background:</b>	The protein encoded by this gene is part of a large protein complex that is necessary for autophagy, the major process by which intracellular components are targeted to lysosomes for degradation. Defects in this gene are a cause of susceptibility to inflammatory bowel disease type 10 (IBD10). Several transcript variants encoding different isoforms have been found for this gene. [provided by RefSeq, Jun 2010]
<b>Synonyms:</b>	APG16L; ATG16A; ATG16L; IBD10; WDR30



[View online »](#)

## Product images:



HEK293T cells were transfected with the pCMV6-ENTRY control (Left lane) or pCMV6-ENTRY ATG16L1 ([RC216728], Right lane) cDNA for 48 hrs and lysed. Equivalent amounts of cell lysates (5 ug per lane) were separated by SDS-PAGE and immunoblotted with anti-ATG16L1 (1:2000). Positive lysates [LY410699] (100ug) and [LC410699] (20ug) can be purchased separately from OriGene.