

Product datasheet for **TA809563S**

LHX4 Mouse Monoclonal Antibody [Clone ID: OTI6H3]

Product data:

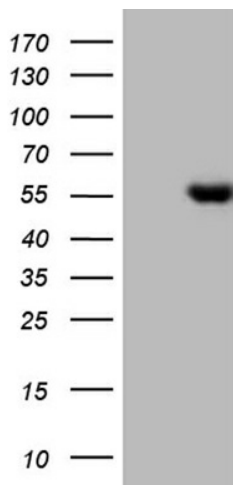
Product Type:	Primary Antibodies
Clone Name:	OTI6H3
Applications:	WB
Recommended Dilution:	WB 1:500~2000
Reactivity:	Human, Mouse, Rat
Host:	Mouse
Isotype:	IgG1
Clonality:	Monoclonal
Immunogen:	Human recombinant protein fragment corresponding to amino acids 1-260 of human LHX4 (NP_203129) produced in E.coli.
Formulation:	PBS (pH 7.3) containing 1% BSA, 50% glycerol and 0.02% sodium azide.
Concentration:	1 mg/ml
Purification:	Purified from mouse ascites fluids or tissue culture supernatant by affinity chromatography (protein A/G)
Conjugation:	Unconjugated
Storage:	Store at -20°C as received.
Stability:	Stable for 12 months from date of receipt.
Predicted Protein Size:	42.9 kDa
Gene Name:	LIM homeobox 4
Database Link:	NP_203129 Entrez Gene 16872 Mouse Entrez Gene 360858 Rat Entrez Gene 89884 Human Q969G2
Background:	This gene encodes a member of a large protein family which contains the LIM domain, a unique cysteine-rich zinc-binding domain. The encoded protein is a transcription factor involved in the control of differentiation and development of the pituitary gland. Mutations in this gene cause combined pituitary hormone deficiency 4. [provided by RefSeq, Dec 2010]
Synonyms:	CPHD4



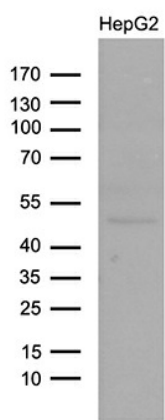
[View online »](#)

Protein Families: Druggable Genome, Transcription Factors

Product images:



HEK293T cells were transfected with the pCMV6-ENTRY control (Left lane) or pCMV6-ENTRY LHX4 ([RC204014], Right lane) cDNA for 48 hrs and lysed. Equivalent amounts of cell lysates (5 ug per lane) were separated by SDS-PAGE and immunoblotted with anti-LHX4 (1:2000). Positive lysates [LY403244] (100ug) and [LC403244] (20ug) can be purchased separately from OriGene.



Western blot analysis of extracts (35ug) from HepG2 by using anti-LHX4 monoclonal antibody (1:500).