

Product datasheet for **TA809554M**

SYNC Mouse Monoclonal Antibody [Clone ID: OTI4E2]

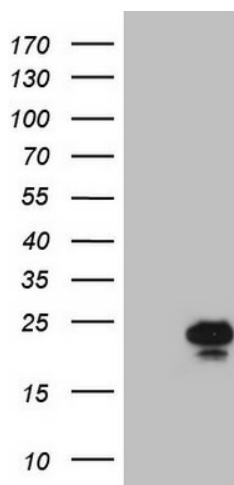
Product data:

Product Type:	Primary Antibodies
Clone Name:	OTI4E2
Applications:	WB
Recommended Dilution:	WB 1:2000
Reactivity:	Human
Host:	Mouse
Isotype:	IgG1
Clonality:	Monoclonal
Immunogen:	Full length human recombinant protein of human SYNC (NP_110413) produced in E.coli.
Formulation:	PBS (pH 7.3) containing 1% BSA, 50% glycerol and 0.02% sodium azide.
Concentration:	1 mg/ml
Purification:	Purified from mouse ascites fluids or tissue culture supernatant by affinity chromatography (protein A/G)
Conjugation:	Unconjugated
Storage:	Store at -20°C as received.
Stability:	Stable for 12 months from date of receipt.
Predicted Protein Size:	17.7 kDa
Gene Name:	syncoilin, intermediate filament protein
Database Link:	NP_110413 Entrez Gene 81493 Human Q9H7C4
Background:	This gene encodes a member of the intermediate filament family which contains an N-terminal head domain, followed by a central coiled-coil region and a short C-terminal tail. The protein is highly expressed in skeletal and cardiac muscle. The protein links the dystrophin associated protein complex (DAPC) to desmin filaments in muscle and may have a structural role in striated muscle. Multiple transcript variants encoding different isoforms have been found for this gene. [provided by RefSeq, Jun 2009]


[View online »](#)

Synonyms: SYNC1; SYNCOILIN

Product images:



HEK293T cells were transfected with the pCMV6-ENTRY control (Left lane) or pCMV6-ENTRY SYNC ([RC220935], Right lane) cDNA for 48 hrs and lysed. Equivalent amounts of cell lysates (5 ug per lane) were separated by SDS-PAGE and immunoblotted with anti-SYNC (1:2000). Positive lysates [LY410708] (100ug) and [LC410708] (20ug) can be purchased separately from OriGene.