

## Product datasheet for TA809553M

### Myotilin (MYOT) Mouse Monoclonal Antibody [Clone ID: OTI10A11]

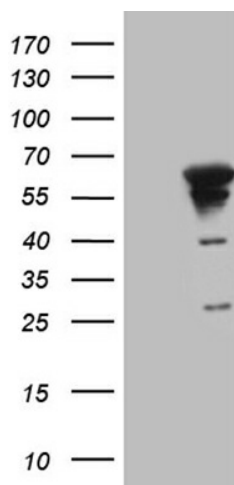
#### Product data:

Product Type:	Primary Antibodies
Clone Name:	OTI10A11
Applications:	WB
Recommended Dilution:	WB 1:2000
Reactivity:	Human, Mouse, Rat
Host:	Mouse
Isotype:	IgG1
Clonality:	Monoclonal
Immunogen:	Full length human recombinant protein of human MYOT (NP_006781) produced in E.coli.
Formulation:	PBS (pH 7.3) containing 1% BSA, 50% glycerol and 0.02% sodium azide.
Concentration:	1 mg/ml
Purification:	Purified from mouse ascites fluids or tissue culture supernatant by affinity chromatography (protein A/G)
Conjugation:	Unconjugated
Storage:	Store at -20°C as received.
Stability:	Stable for 12 months from date of receipt.
Predicted Protein Size:	55.2 kDa
Gene Name:	myotilin
Database Link:	<a href="#">NP_006781</a> <a href="#">Entrez Gene 9499 Human</a> <a href="#">Q9UBF9</a>
Background:	This gene encodes a cytoskeletal protein which plays a significant role in the stability of thin filaments during muscle contraction. This protein binds F-actin, crosslinks actin filaments, and prevents latrunculin A-induced filament disassembly. Mutations in this gene have been associated with limb-girdle muscular dystrophy and myofibrillar myopathies. Several alternatively spliced transcript variants of this gene have been described, but the full-length nature of some of these variants has not been determined. [provided by RefSeq, Oct 2008]


[View online »](#)

**Synonyms:** LGMD1; LGMD1A; MFM3; TTID; TTOD

**Product images:**



HEK293T cells were transfected with the pCMV6-ENTRY control (Left lane) or pCMV6-ENTRY MYOT ([RC202797], Right lane) cDNA for 48 hrs and lysed. Equivalent amounts of cell lysates (5 ug per lane) were separated by SDS-PAGE and immunoblotted with anti-MYOT (1:2000). Positive lysates [LY402026] (100ug) and [LC402026] (20ug) can be purchased separately from OriGene.