

## Product datasheet for **TA809552M**

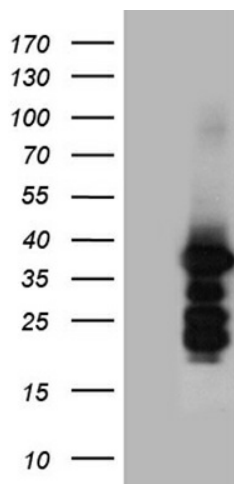
### ZCCHC17 Mouse Monoclonal Antibody [Clone ID: OTI7F9]

#### Product data:

Product Type:	Primary Antibodies
Clone Name:	OTI7F9
Applications:	WB
Recommended Dilution:	WB 1:500
Reactivity:	Human, Mouse, Rat
Host:	Mouse
Isotype:	IgG1
Clonality:	Monoclonal
Immunogen:	Full length human recombinant protein of human ZCCHC17 (NP_057589) produced in E.coli.
Formulation:	PBS (pH 7.3) containing 1% BSA, 50% glycerol and 0.02% sodium azide.
Concentration:	1 mg/ml
Purification:	Purified from mouse ascites fluids or tissue culture supernatant by affinity chromatography (protein A/G)
Conjugation:	Unconjugated
Storage:	Store at -20°C as received.
Stability:	Stable for 12 months from date of receipt.
Predicted Protein Size:	27.4 kDa
Gene Name:	zinc finger CCHC-type containing 17
Database Link:	<a href="#">NP_057589</a> <a href="#">Entrez Gene 500555 Rat</a> <a href="#">Entrez Gene 619605 Mouse</a> <a href="#">Entrez Gene 51538 Human</a> <a href="#">Q9NP64</a>
Synonyms:	HSPC251; pNO40; PS1D



[View online »](#)

**Product images:**


HEK293T cells were transfected with the pCMV6-ENTRY control (Cat# [PS100001], Left lane) or pCMV6-ENTRY ZCCHC17 (Cat# [RC236855], Right lane) cDNA for 48 hrs and lysed. Equivalent amounts of cell lysates (5 ug per lane) were separated by SDS-PAGE and immunoblotted with anti-ZCCHC17 (Cat# [TA809552])(1:500). Positive lysates [LY413942] (100ug) and [LC413942] (20ug) can be purchased separately from OriGene.