

## Product datasheet for **TA809548AM**

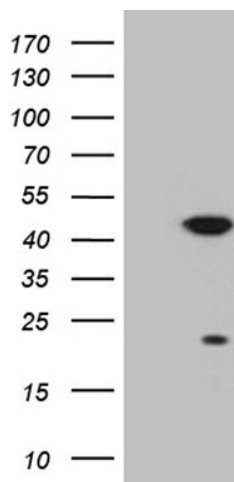
### CCRK (CDK20) Mouse Monoclonal Antibody (Biotin conjugated) [Clone ID: OTI1B3]

#### Product data:

Product Type:	Primary Antibodies
Clone Name:	OTI1B3
Applications:	WB
Recommended Dilution:	WB 1:2000
Reactivity:	Human, Mouse, Rat
Host:	Mouse
Isotype:	IgG1
Clonality:	Monoclonal
Immunogen:	Full length human recombinant protein of human CDK20 (NP_848519) produced in E.coli.
Formulation:	PBS (pH 7.3) containing 1% BSA, 50% glycerol and 0.02% sodium azide.
Concentration:	0.5 mg/ml
Purification:	Purified from mouse ascites fluids or tissue culture supernatant by affinity chromatography (protein A/G)
Conjugation:	Biotin
Storage:	Store at -20°C as received.
Stability:	Stable for 12 months from date of receipt.
Predicted Protein Size:	37.4 kDa
Gene Name:	cyclin-dependent kinase 20
Database Link:	<a href="#">NP_848519</a> <a href="#">Entrez Gene 105278 Mouse</a> <a href="#">Entrez Gene 364666 Rat</a> <a href="#">Entrez Gene 23552 Human</a> <a href="#">Q8IZL9</a>
Background:	The protein encoded by this gene contains a kinase domain most closely related to the cyclin-dependent protein kinases. The encoded kinase may activate cyclin-dependent kinase 2 and is involved in cell growth. Alternatively spliced transcript variants encoding distinct isoforms have been reported. [provided by RefSeq, Dec 2009]
Synonyms:	CCRK; CDCH; P42; PNQALRE
Protein Families:	Druggable Genome, Protein Kinase



[View online »](#)

**Product images:**

HEK293T cells were transfected with the pCMV6-ENTRY control (Cat# [PS100001], Left lane) or pCMV6-ENTRY CDK20 (Cat# [RC214191], Right lane) cDNA for 48 hrs and lysed. Equivalent amounts of cell lysates (5 ug per lane) were separated by SDS-PAGE and immunoblotted with anti-CDK20 (Cat# [TA809548])(1:2000). Positive lysates [LY405956] (100ug) and [LC405956] (20ug) can be purchased separately from OriGene.