

Product datasheet for **TA809524AM**

PEG10 Mouse Monoclonal Antibody (Biotin conjugated) [Clone ID: OTI1G10]

Product data:

Product Type:	Primary Antibodies
Clone Name:	OTI1G10
Applications:	WB
Recommended Dilution:	WB 1:500
Reactivity:	Human
Host:	Mouse
Isotype:	IgG1
Clonality:	Monoclonal
Immunogen:	Full length human recombinant protein of human PEG10 (NP_001035242) produced in HEK293T cell.
Formulation:	PBS (pH 7.3) containing 1% BSA, 50% glycerol and 0.02% sodium azide.
Concentration:	0.5 mg/ml
Purification:	Purified from mouse ascites fluids or tissue culture supernatant by affinity chromatography (protein A/G)
Conjugation:	Biotin
Storage:	Store at -20°C as received.
Stability:	Stable for 12 months from date of receipt.
Predicted Protein Size:	36.8 kDa
Gene Name:	paternally expressed 10
Database Link:	NP_001035242 Entrez Gene 23089 Human Q86TG7



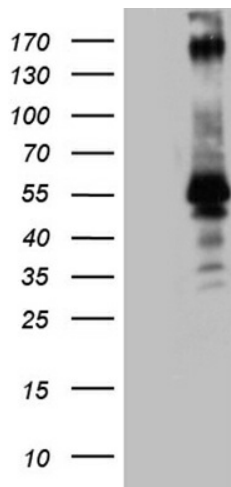
[View online »](#)

Background:

This is a paternally expressed imprinted gene that encodes transcripts containing two overlapping open reading frames (ORFs), RF1 and RF1/RF2, as well as retroviral-like slippage and pseudoknot elements, which can induce a -1 nucleotide frame-shift. ORF1 encodes a shorter isoform with a CCHC-type zinc finger motif containing a sequence characteristic of gag proteins of most retroviruses and some retrotransposons. The longer isoform is the result of -1 translational frame-shifting leading to translation of a gag/pol-like protein combining RF1 and RF2. It contains the active-site consensus sequence of the protease domain of pol proteins. Additional isoforms resulting from alternatively spliced transcript variants, as well as from use of upstream non-AUG (CUG) start codon, have been reported for this gene. Increased expression of this gene is associated with hepatocellular carcinomas. [provided by RefSeq, May 2010]

Synonyms:

EDR; HB-1; Mar2; Mart2; MEF3L; RGAG3

Product images:

HEK293T cells were transfected with the pCMV6-ENTRY control (Cat# [PS100001], Left lane) or pCMV6-ENTRY PEG10 (Cat# [RC208683], Right lane) cDNA for 48 hrs and lysed. Equivalent amounts of cell lysates (5 ug per lane) were separated by SDS-PAGE and immunoblotted with anti-PEG10. (1:2000) (Cat# [TA809524])(1:500). Positive lysates [LY421697] (100ug) and [LC421697] (20ug) can be purchased separately from OriGene.