

Product datasheet for **TA809521AM**

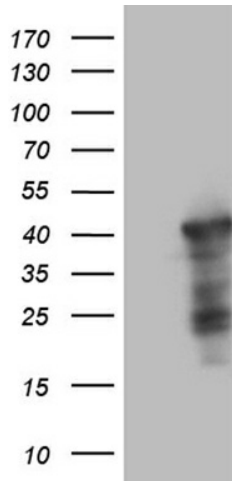
DNAAF10 Mouse Monoclonal Antibody (Biotin conjugated) [Clone ID: OTI1H8]

Product data:

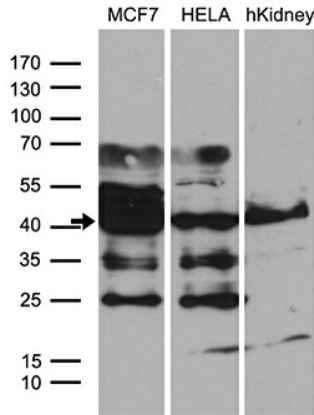
Product Type:	Primary Antibodies
Clone Name:	OTI1H8
Applications:	WB
Recommended Dilution:	WB 1:500~2000
Reactivity:	Human, Mouse, Rat
Host:	Mouse
Isotype:	IgG1
Clonality:	Monoclonal
Immunogen:	Full length human recombinant protein of human WDR92 (NP_612467) produced in HEK293T cell.
Formulation:	PBS (pH 7.3) containing 1% BSA, 50% glycerol and 0.02% sodium azide.
Concentration:	0.5 mg/ml
Purification:	Purified from mouse ascites fluids or tissue culture supernatant by affinity chromatography (protein A/G)
Conjugation:	Biotin
Storage:	Store at -20°C as received.
Stability:	Stable for 12 months from date of receipt.
Predicted Protein Size:	39.6 kDa
Gene Name:	WD repeat domain 92
Database Link:	NP_612467 Entrez Gene 103784 Mouse Entrez Gene 498418 Rat Entrez Gene 116143 Human Q96MX6
Background:	This gene encodes a protein with two WD40 repeat domains thought to be involved in an apoptosis via activation of caspase-3. Multiple transcript variants encoding different isoforms have been found for this gene. [provided by RefSeq, Feb 2012]
Synonyms:	FLJ31741
Protein Families:	Druggable Genome



[View online »](#)

Product images:


HEK293T cells were transfected with the pCMV6-ENTRY control (Left lane) or pCMV6-ENTRY WDR92 ([RC208985], Right lane) cDNA for 48 hrs and lysed. Equivalent amounts of cell lysates (5 ug per lane) were separated by SDS-PAGE and immunoblotted with anti-WDR92 (1:2000). Positive lysates [LY408608] (100ug) and [LC408608] (20ug) can be purchased separately from OriGene.



Western blot analysis of extracts (35ug) from 2 different cell lines and human kidney tissue lysate by using anti-WDR92 monoclonal antibody (1:500).