

## Product datasheet for **TA809519BM**

### RPL10A Mouse Monoclonal Antibody (HRP conjugated) [Clone ID: OTI2G9]

#### Product data:

Product Type:	Primary Antibodies
Clone Name:	OTI2G9
Applications:	IHC, WB
Recommended Dilution:	WB 1:500~2000, IHC 1:2000
Reactivity:	Human, Mouse, Rat
Host:	Mouse
Isotype:	IgG2a
Clonality:	Monoclonal
Immunogen:	Full length human recombinant protein of human RPL10A (NP_009035) produced in E.coli.
Formulation:	PBS (pH 7.3) containing 1% BSA, 50% glycerol.
Concentration:	0.5 mg/ml
Purification:	Purified from mouse ascites fluids or tissue culture supernatant by affinity chromatography (protein A/G)
Conjugation:	HRP
Storage:	Store at -20°C as received.
Stability:	Stable for 12 months from date of receipt.
Predicted Protein Size:	24.7 kDa
Gene Name:	ribosomal protein L10a
Database Link:	<a href="#">NP_009035</a> <a href="#">Entrez Gene 19896 Mouse</a> <a href="#">Entrez Gene 81729 Rat</a> <a href="#">Entrez Gene 4736 Human</a> <a href="#">P62906</a>



[View online »](#)

**Background:**

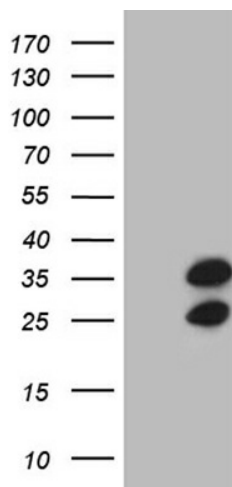
Ribosomes, the organelles that catalyze protein synthesis, consist of a small 40S subunit and a large 60S subunit. Together these subunits are composed of 4 RNA species and approximately 80 structurally distinct proteins. This gene encodes a ribosomal protein that is a component of the 60S subunit. The protein belongs to the L1P family of ribosomal proteins. It is located in the cytoplasm. The expression of this gene is downregulated in the thymus by cyclosporin-A (CsA), an immunosuppressive drug. Studies in mice have shown that the expression of the ribosomal protein L10a gene is downregulated in neural precursor cells during development. This gene previously was referred to as NEDD6 (neural precursor cell expressed, developmentally downregulated 6), but it has been renamed RPL10A (ribosomal protein 10a). As is typical for genes encoding ribosomal proteins, there are multiple processed pseudogenes of this gene dispersed through the genome. [provided by RefSeq, Jul 2008]

**Synonyms:**

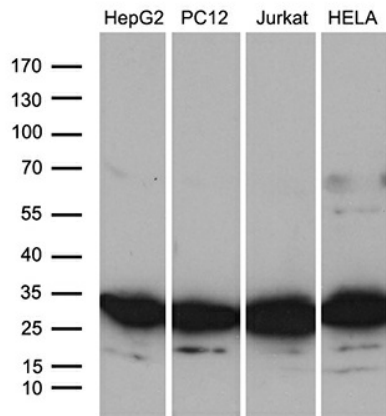
Csa-19; CSA19; L10A; NEDD6

**Protein Pathways:**

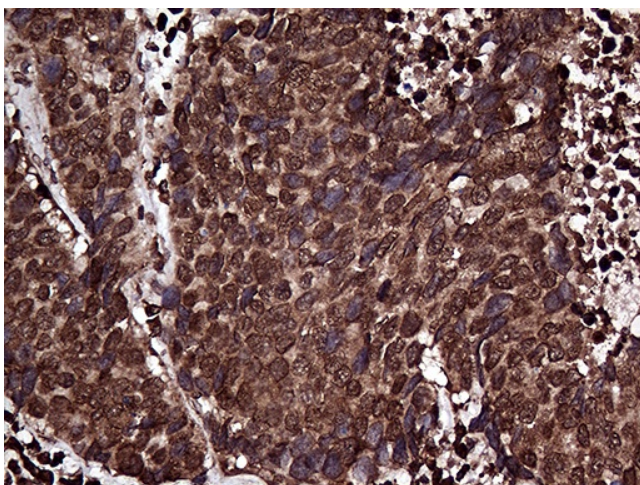
Ribosome

**Product images:**

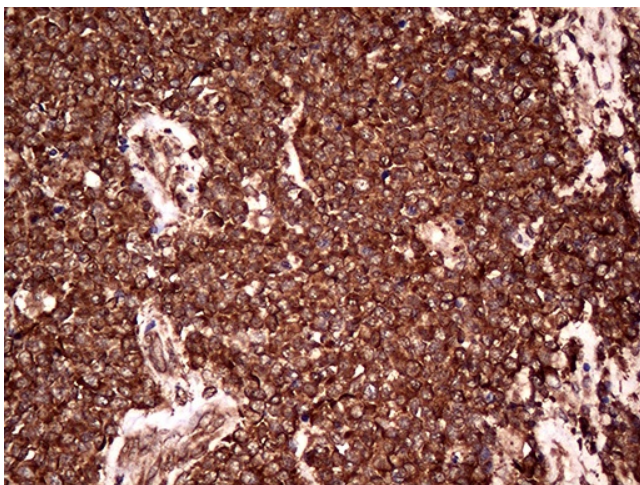
HEK293T cells were transfected with the pCMV6-ENTRY control (Left lane) or pCMV6-ENTRY RPL10A ([RC209987], Right lane) cDNA for 48 hrs and lysed. Equivalent amounts of cell lysates (5 ug per lane) were separated by SDS-PAGE and immunoblotted with anti-RPL10A (1:2000). Positive lysates [LY416199] (100ug) and [LC416199] (20ug) can be purchased separately from OriGene.



Western blot analysis of extracts (35ug) from 4 different cell lines by using anti-RPL10A monoclonal antibody (1:500).



Immunohistochemical staining of paraffin-embedded Carcinoma of Human lung tissue using anti-RPL10A mouse monoclonal antibody. (Heat-induced epitope retrieval by 1mM EDTA in 10mM Tris buffer (pH8.5) at 120°C for 3min, [TA809519]) (1:2000)



Immunohistochemical staining of paraffin-embedded Human lymphoma tissue using anti-RPL10A mouse monoclonal antibody. (Heat-induced epitope retrieval by 1mM EDTA in 10mM Tris buffer (pH8.5) at 120°C for 3min, [TA809519]) (1:2000)