

## Product datasheet for **TA809516S**

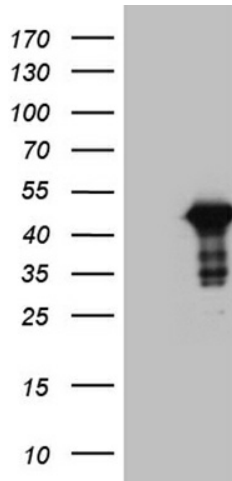
### **DNAAF10 Mouse Monoclonal Antibody [Clone ID: OTI4B5]**

#### **Product data:**

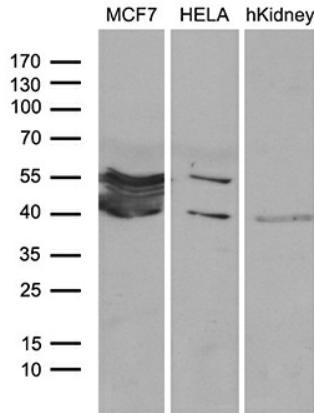
Product Type:	Primary Antibodies
Clone Name:	OTI4B5
Applications:	WB
Recommended Dilution:	WB 1:500~2000
Reactivity:	Human, Mouse, Rat
Host:	Mouse
Isotype:	IgG2b
Clonality:	Monoclonal
Immunogen:	Full length human recombinant protein of human WDR92 (NP_612467) produced in HEK293T cell.
Formulation:	PBS (pH 7.3) containing 1% BSA, 50% glycerol and 0.02% sodium azide.
Concentration:	1 mg/ml
Purification:	Purified from mouse ascites fluids or tissue culture supernatant by affinity chromatography (protein A/G)
Conjugation:	Unconjugated
Storage:	Store at -20°C as received.
Stability:	Stable for 12 months from date of receipt.
Predicted Protein Size:	39.6 kDa
Gene Name:	WD repeat domain 92
Database Link:	<a href="#">NP_612467</a> <a href="#">Entrez Gene 103784 Mouse</a> <a href="#">Entrez Gene 498418 Rat</a> <a href="#">Entrez Gene 116143 Human</a> <a href="#">Q96MX6</a>
Background:	This gene encodes a protein with two WD40 repeat domains thought to be involved in an apoptosis via activation of caspase-3. Multiple transcript variants encoding different isoforms have been found for this gene. [provided by RefSeq, Feb 2012]
Synonyms:	FLJ31741
Protein Families:	Druggable Genome



[View online »](#)

**Product images:**


HEK293T cells were transfected with the pCMV6-ENTRY control (Left lane) or pCMV6-ENTRY WDR92 ([RC208985], Right lane) cDNA for 48 hrs and lysed. Equivalent amounts of cell lysates (5 ug per lane) were separated by SDS-PAGE and immunoblotted with anti-WDR92 (1:2000). Positive lysates [LY408608] (100ug) and [LC408608] (20ug) can be purchased separately from OriGene.



Western blot analysis of extracts (35ug) from 2 different cell lines and human kidney tissue lysate by using anti-WDR92 monoclonal antibody (1:500).