

## Product datasheet for **TA809513AM**

### HEF1 (NEDD9) Mouse Monoclonal Antibody (Biotin conjugated) [Clone ID: OTI3H4]

#### Product data:

Product Type:	Primary Antibodies
Clone Name:	OTI3H4
Applications:	WB
Recommended Dilution:	WB 1:2000
Reactivity:	Human, Mouse, Rat
Host:	Mouse
Isotype:	IgG1
Clonality:	Monoclonal
Immunogen:	Full length human recombinant protein of human NEDD9 (NP_006394) produced in HEK293T cell.
Formulation:	PBS (pH 7.3) containing 1% BSA, 50% glycerol and 0.02% sodium azide.
Concentration:	0.5 mg/ml
Purification:	Purified from mouse ascites fluids or tissue culture supernatant by affinity chromatography (protein A/G)
Conjugation:	Biotin
Storage:	Store at -20°C as received.
Stability:	Stable for 12 months from date of receipt.
Predicted Protein Size:	92.7 kDa
Gene Name:	neural precursor cell expressed, developmentally down-regulated 9
Database Link:	<a href="#">NP_006394</a> <a href="#">Entrez Gene 18003 Mouse</a> <a href="#">Entrez Gene 291044 Rat</a> <a href="#">Entrez Gene 4739 Human</a> <a href="#">Q14511</a>



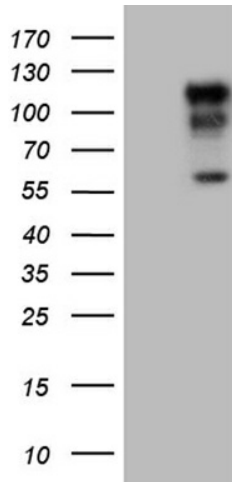
[View online »](#)

**Background:**

The protein encoded by this gene is a member of the CRK-associated substrates family. Members of this family are adhesion docking molecules that mediate protein-protein interactions for signal transduction pathways. This protein is a focal adhesion protein that acts as a scaffold to regulate signaling complexes important in cell attachment, migration and invasion as well as apoptosis and the cell cycle. This protein has also been reported to have a role in cancer metastasis. Alternative splicing results in multiple transcript variants. [provided by RefSeq, Aug 2012]

**Synonyms:**

CAS-L; CAS2; CASL; CASS2; HEF1

**Product images:**

HEK293T cells were transfected with the pCMV6-ENTRY control (Cat# [PS100001], Left lane) or pCMV6-ENTRY NEDD9 (Cat# [RC207200], Right lane) cDNA for 48 hrs and lysed. Equivalent amounts of cell lysates (5 ug per lane) were separated by SDS-PAGE and immunoblotted with anti-NEDD9 (Cat# [TA809513])(1:2000). Positive lysates [LY401924] (100ug) and [LC401924] (20ug) can be purchased separately from OriGene.