

Product datasheet for **TA809509S**

OTX2 Mouse Monoclonal Antibody [Clone ID: OTI1B2]

Product data:

Product Type:	Primary Antibodies
Clone Name:	OTI1B2
Applications:	WB
Recommended Dilution:	WB 1:2000
Reactivity:	Human, Mouse, Rat
Host:	Mouse
Isotype:	IgG1
Clonality:	Monoclonal
Immunogen:	Full length human recombinant protein of human OTX2 (NP_068374) produced in E.coli.
Formulation:	PBS (pH 7.3) containing 1% BSA, 50% glycerol and 0.02% sodium azide.
Concentration:	1 mg/ml
Purification:	Purified from mouse ascites fluids or tissue culture supernatant by affinity chromatography (protein A/G)
Conjugation:	Unconjugated
Storage:	Store at -20°C as received.
Stability:	Stable for 12 months from date of receipt.
Predicted Protein Size:	32.2 kDa
Gene Name:	orthodenticle homeobox 2
Database Link:	NP_068374 Entrez Gene 18424 Mouse Entrez Gene 305858 Rat Entrez Gene 5015 Human P32243



[View online »](#)

Background:

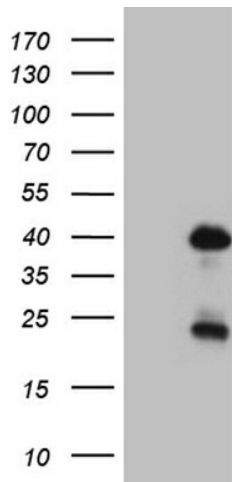
This gene encodes a member of the bicoid subfamily of homeodomain-containing transcription factors. The encoded protein acts as a transcription factor and plays a role in brain, craniofacial, and sensory organ development. The encoded protein also influences the proliferation and differentiation of dopaminergic neuronal progenitor cells during mitosis. Mutations in this gene cause syndromic microphthalmia 5 (MCOPS5) and combined pituitary hormone deficiency 6 (CPHD6). This gene is also suspected of having an oncogenic role in medulloblastoma. Alternative splicing results in multiple transcript variants encoding distinct isoforms. Pseudogenes of this gene are known to exist on chromosomes two and nine. [provided by RefSeq, Jul 2012]

Synonyms:

CPHD6; MCOPS5

Protein Families:

Embryonic stem cells, Induced pluripotent stem cells, Stem cell - Pluripotency, Transcription Factors

Product images:

HEK293T cells were transfected with the pCMV6-ENTRY control (Left lane) or pCMV6-ENTRY OTX2 ([RC207479], Right lane) cDNA for 48 hrs and lysed. Equivalent amounts of cell lysates (5 ug per lane) were separated by SDS-PAGE and immunoblotted with anti-OTX2 (1:2000). Positive lysates [LY411946] (100ug) and [LC411946] (20ug) can be purchased separately from OriGene.