

Product datasheet for **TA809506**

GLS2 Mouse Monoclonal Antibody [Clone ID: OTI6D11]

Product data:

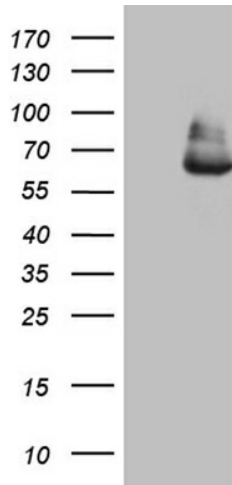
Product Type:	Primary Antibodies
Clone Name:	OTI6D11
Applications:	WB
Recommended Dilution:	WB 1:2000
Reactivity:	Human, Mouse, Rat
Host:	Mouse
Isotype:	IgG2b
Clonality:	Monoclonal
Immunogen:	Full length human recombinant protein of human GLS2 (NP_037399) produced in E.coli.
Formulation:	PBS (pH 7.3) containing 1% BSA, 50% glycerol and 0.02% sodium azide.
Concentration:	1 mg/ml
Purification:	Purified from mouse ascites fluids or tissue culture supernatant by affinity chromatography (protein A/G)
Conjugation:	Unconjugated
Storage:	Store at -20°C as received.
Stability:	Stable for 12 months from date of receipt.
Predicted Protein Size:	66.8 kDa
Gene Name:	glutaminase 2
Database Link:	NP_037399 Entrez Gene 192268 Rat Entrez Gene 216456 Mouse Entrez Gene 27165 Human Q9UI32
Background:	The protein encoded by this gene is a mitochondrial phosphate-activated glutaminase that catalyzes the hydrolysis of glutamine to stoichiometric amounts of glutamate and ammonia. Originally thought to be liver-specific, this protein has been found in other tissues as well. Alternative splicing results in multiple transcript variants that encode different isoforms. [provided by RefSeq, Jul 2013]
Synonyms:	GA; GLS; hLGA; LGA



[View online »](#)

Protein Pathways:

Alanine, aspartate and glutamate metabolism, Arginine and proline metabolism, D-Glutamine and D-glutamate metabolism, Metabolic pathways, Nitrogen metabolism

Product images:

HEK293T cells were transfected with the pCMV6-ENTRY control (Left lane) or pCMV6-ENTRY GLS2 ([RC212650], Right lane) cDNA for 48 hrs and lysed. Equivalent amounts of cell lysates (5 ug per lane) were separated by SDS-PAGE and immunoblotted with anti-GLS2 (1:2000). Positive lysates [LY415701] (100ug) and [LC415701] (20ug) can be purchased separately from OriGene.