

Product datasheet for **TA809493BM**

RBPJK (RBPJ) Mouse Monoclonal Antibody (HRP conjugated) [Clone ID: OTI4B11]

Product data:

Product Type:	Primary Antibodies
Clone Name:	OTI4B11
Applications:	WB
Recommended Dilution:	WB 1:500
Reactivity:	Human, Mouse, Rat
Host:	Mouse
Isotype:	IgG1
Clonality:	Monoclonal
Immunogen:	Human recombinant protein fragment corresponding to amino acids 1-243 of human RBPJ (NP_005340) produced in E.coli.
Formulation:	PBS (pH 7.3) containing 1% BSA, 50% glycerol.
Concentration:	0.5 mg/ml
Purification:	Purified from mouse ascites fluids or tissue culture supernatant by affinity chromatography (protein A/G)
Conjugation:	HRP
Storage:	Store at -20°C as received.
Stability:	Stable for 12 months from date of receipt.
Predicted Protein Size:	55.5 kDa
Gene Name:	recombination signal binding protein for immunoglobulin kappa J region
Database Link:	NP_005340 Entrez Gene 19664 Mouse Entrez Gene 679028 Rat Entrez Gene 3516 Human Q06330



[View online »](#)

Background:

The protein encoded by this gene is a transcriptional regulator important in the Notch signaling pathway. The encoded protein acts as a repressor when not bound to Notch proteins and an activator when bound to Notch proteins. It is thought to function by recruiting chromatin remodeling complexes containing histone deacetylase or histone acetylase proteins to Notch signaling pathway genes. Several transcript variants encoding different isoforms have been found for this gene, and several pseudogenes of this gene exist on chromosome 9. [provided by RefSeq, Oct 2013]

Synonyms:

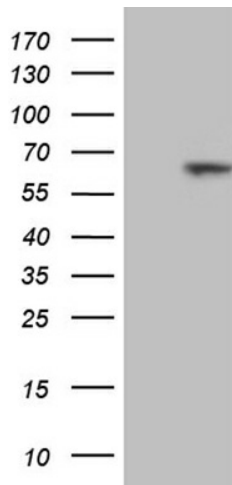
AOS3; CBF1; csl; IGKJRB; IGKJRB1; KBF2; RBP-J; RBPJK; RBPSUH; SUH

Protein Families:

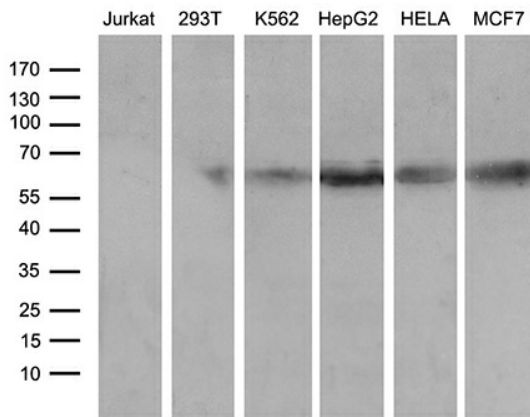
Transcription Factors

Protein Pathways:

Notch signaling pathway

Product images:


HEK293T cells were transfected with the pCMV6-ENTRY control (Cat# [PS100001], Left lane) or pCMV6-ENTRY RBPJ (Cat# [RC218121], Right lane) cDNA for 48 hrs and lysed. Equivalent amounts of cell lysates (5 ug per lane) were separated by SDS-PAGE and immunoblotted with anti-RBPJ (Cat# [TA809493])(1:500). Positive lysates [LY401647] (100ug) and [LC401647] (20ug) can be purchased separately from OriGene.



Western blot analysis of extracts (35ug) from 6 different cell lines by using anti-RBPJ monoclonal antibody (1:500).