

## Product datasheet for **TA809486AM**

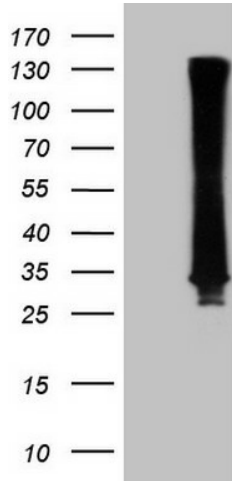
### **RAB3A Mouse Monoclonal Antibody (Biotin conjugated) [Clone ID: OTI6D10]**

#### **Product data:**

Product Type:	Primary Antibodies
Clone Name:	OTI6D10
Applications:	WB
Recommended Dilution:	WB 1:2000
Reactivity:	Human, Mouse, Rat
Host:	Mouse
Isotype:	IgG1
Clonality:	Monoclonal
Immunogen:	Full length human recombinant protein of human RAB3A(NP_002857) produced in E.coli.
Formulation:	PBS (pH 7.3) containing 1% BSA, 50% glycerol and 0.02% sodium azide.
Concentration:	0.5 mg/ml
Purification:	Purified from mouse ascites fluids or tissue culture supernatant by affinity chromatography (protein A/G)
Conjugation:	Biotin
Storage:	Store at -20°C as received.
Stability:	Stable for 12 months from date of receipt.
Gene Name:	RAB3A, member RAS oncogene family
Database Link:	<a href="#">NP_002857</a> <a href="#">Entrez Gene 5864 Human</a> <a href="#">P20336</a>
Background:	Involved in exocytosis by regulating a late step in synaptic vesicle fusion. Could play a role in neurotransmitter release by regulating membrane flow in the nerve terminal. [UniProtKB/Swiss-Prot Function]
Protein Families:	Druggable Genome



[View online »](#)

**Product images:**

HEK293T cells were transfected with the pCMV6-ENTRY control (Left lane) or pCMV6-ENTRY RAB3A ([RC203973], Right lane) cDNA for 48 hrs and lysed. Equivalent amounts of cell lysates (5 ug per lane) were separated by SDS-PAGE and immunoblotted with anti-RAB3A (1:2000). Positive lysates [LY419059] (100ug) and [LC419059] (20ug) can be purchased separately from OriGene.