

## Product datasheet for **TA809467S**

### IL24 Mouse Monoclonal Antibody [Clone ID: OTI5C8]

#### Product data:

Product Type:	Primary Antibodies
Clone Name:	OTI5C8
Applications:	WB
Recommended Dilution:	WB 1:2000
Reactivity:	Human
Host:	Mouse
Isotype:	IgG1
Clonality:	Monoclonal
Immunogen:	Human recombinant protein fragment corresponding to amino acids 52-206 of human IL24(NP_006841) produced in E.coli.
Formulation:	PBS (pH 7.3) containing 1% BSA, 50% glycerol and 0.02% sodium azide.
Concentration:	1 mg/ml
Purification:	Purified from mouse ascites fluids or tissue culture supernatant by affinity chromatography (protein A/G)
Conjugation:	Unconjugated
Storage:	Store at -20°C as received.
Stability:	Stable for 12 months from date of receipt.
Predicted Protein Size:	18.4 kDa
Gene Name:	interleukin 24
Database Link:	<a href="#">NP_006841</a> <a href="#">Entrez Gene 11009 Human</a> <a href="#">Q13007</a>



[View online »](#)

**Background:**

This gene encodes a member of the IL10 family of cytokines. It was identified as a gene induced during terminal differentiation in melanoma cells. The protein encoded by this gene can induce apoptosis selectively in various cancer cells. Overexpression of this gene leads to elevated expression of several GADD family genes, which correlates with the induction of apoptosis. The phosphorylation of mitogen-activated protein kinase 14 (MAPK7/P38), and heat shock 27kDa protein 1 (HSPB2/HSP27) are found to be induced by this gene in melanoma cells, but not in normal immortal melanocytes. Alternatively spliced transcript variants encoding distinct isoforms have been reported. [provided by RefSeq, Jul 2008]

**Synonyms:**

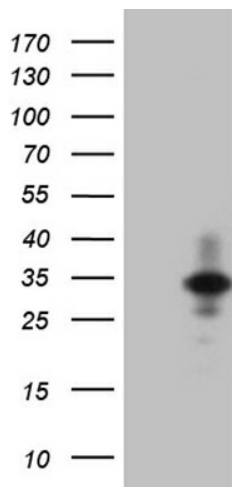
C49A; FISP; IL10B; MDA7; MOB5; ST16

**Protein Families:**

Druggable Genome, Secreted Protein

**Protein Pathways:**

Cytokine-cytokine receptor interaction, Jak-STAT signaling pathway

**Product images:**

HEK293T cells were transfected with the pCMV6-ENTRY control (Left lane) or pCMV6-ENTRY IL24 ([RC216502], Right lane) cDNA for 48 hrs and lysed. Equivalent amounts of cell lysates (5 ug per lane) were separated by SDS-PAGE and immunoblotted with anti-IL24 (1:2000). Positive lysates [LY416383] (100ug) and [LC416383] (20ug) can be purchased separately from OriGene.