

## Product datasheet for **TA809462**

### STK23 (SRPK3) Mouse Monoclonal Antibody [Clone ID: OTI6F5]

#### Product data:

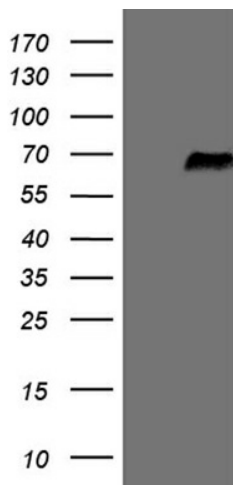
Product Type:	Primary Antibodies
Clone Name:	OTI6F5
Applications:	WB
Recommended Dilution:	WB 1:2000
Reactivity:	Human, Mouse, Rat
Host:	Mouse
Isotype:	IgG1
Clonality:	Monoclonal
Immunogen:	Human recombinant protein fragment corresponding to amino acids 245-330 of human SRPK3 (NP_055185) produced in E.coli.
Formulation:	PBS (pH 7.3) containing 1% BSA, 50% glycerol and 0.02% sodium azide.
Concentration:	1 mg/ml
Purification:	Purified from mouse ascites fluids or tissue culture supernatant by affinity chromatography (protein A/G)
Conjugation:	Unconjugated
Storage:	Store at -20°C as received.
Stability:	Stable for 12 months from date of receipt.
Predicted Protein Size:	61.8 kDa
Gene Name:	SRSF protein kinase 3
Database Link:	<a href="#">NP_055185</a> <a href="#">Entrez Gene 56504 Mouse</a> <a href="#">Entrez Gene 293854 Rat</a> <a href="#">Entrez Gene 26576 Human</a> <a href="#">Q9UPE1</a>
Background:	This gene encodes a protein kinase similar to a protein kinase which is specific for the SR (serine/arginine-rich domain) family of splicing factors. A highly similar protein has been shown to play a role in muscle development in mice. Multiple transcript variants encoding different isoforms have been found for this gene. [provided by RefSeq, Dec 2009]
Synonyms:	MSSK-1; MSSK1; STK23



[View online »](#)

Protein Families: Druggable Genome, Protein Kinase

### Product images:



HEK293T cells were transfected with the pCMV6-ENTRY control (Cat# [PS100001], Left lane) or pCMV6-ENTRY SRPK3 (Cat# [RC215496], Right lane) cDNA for 48 hrs and lysed. Equivalent amounts of cell lysates (5 ug per lane) were separated by SDS-PAGE and immunoblotted with anti-SRPK3 (Cat# TA809462)(1:2000). Positive lysates [LY415334] (100ug) and [LC415334] (20ug) can be purchased separately from OriGene.