

Product datasheet for **TA809458BM**

splicing factor 1 (SF1) Mouse Monoclonal Antibody (HRP conjugated) [Clone ID: OTI4C9]

Product data:

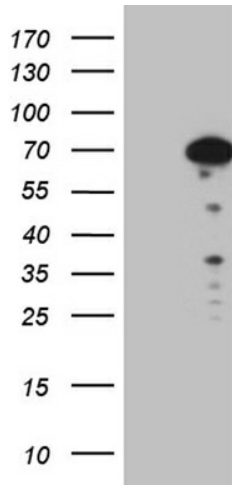
Product Type:	Primary Antibodies
Clone Name:	OTI4C9
Applications:	WB
Recommended Dilution:	WB 1:500~2000
Reactivity:	Human
Host:	Mouse
Isotype:	IgG1
Clonality:	Monoclonal
Immunogen:	Human recombinant protein fragment corresponding to amino acids 1-276 of human SF1 (NP_973727) produced in E.coli.
Formulation:	PBS (pH 7.3) containing 1% BSA, 50% glycerol.
Concentration:	0.5 mg/ml
Purification:	Purified from mouse ascites fluids or tissue culture supernatant by affinity chromatography (protein A/G)
Conjugation:	HRP
Storage:	Store at -20°C as received.
Stability:	Stable for 12 months from date of receipt.
Predicted Protein Size:	59.5 kDa
Gene Name:	splicing factor 1
Database Link:	NP_973727 Entrez Gene 7536 Human Q15637
Background:	This gene encodes a nuclear pre-mRNA splicing factor. The encoded protein specifically recognizes the intron branch point sequence and is required for the early stages of spliceosome assembly. Alternate splicing results in multiple transcript variants. [provided by RefSeq, May 2010]
Synonyms:	BBP; D11S636; MBBP; ZCCHC25; ZFM1; ZNF162



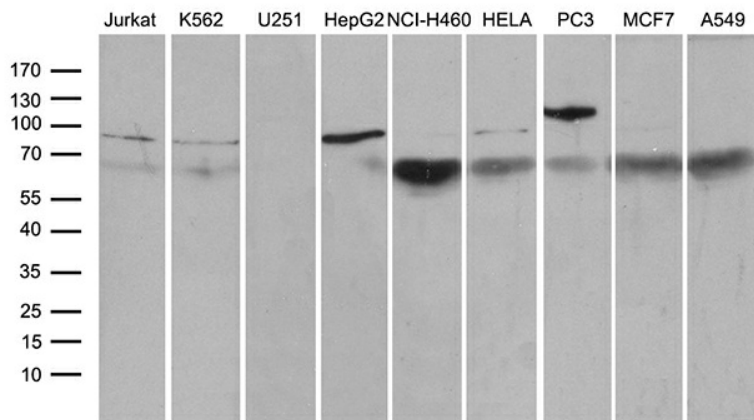
[View online »](#)

Protein Families: Transcription Factors

Product images:



HEK293T cells were transfected with the pCMV6-ENTRY control (Left lane) or pCMV6-ENTRY SF1 ([RC205846], Right lane) cDNA for 48 hrs and lysed. Equivalent amounts of cell lysates (5 ug per lane) were separated by SDS-PAGE and immunoblotted with anti-SF1 (1:2000). Positive lysates [LY404505] (100ug) and [LC404505] (20ug) can be purchased separately from OriGene.



Western blot analysis of extracts (35ug) from 9 different cell lines by using anti-SF1 monoclonal antibody (1:500).