

Product datasheet for **TA809456M**

FOXO3 Mouse Monoclonal Antibody [Clone ID: OTI3E6]

Product data:

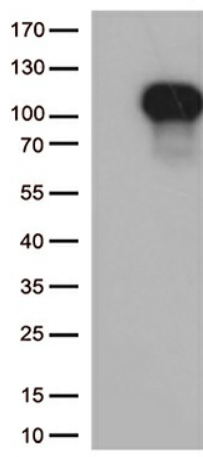
Product Type:	Primary Antibodies
Clone Name:	OTI3E6
Applications:	WB
Recommended Dilution:	WB 1:2000
Reactivity:	Human, Mouse, Rat
Host:	Mouse
Isotype:	IgG1
Clonality:	Monoclonal
Immunogen:	Human recombinant protein fragment corresponding to amino acids 374-673 of human FOXO3(NP_001446) produced in E.coli.
Formulation:	PBS (pH 7.3) containing 1% BSA, 50% glycerol and 0.02% sodium azide.
Concentration:	1 mg/ml
Purification:	Purified from mouse ascites fluids or tissue culture supernatant by affinity chromatography (protein A/G)
Conjugation:	Unconjugated
Storage:	Store at -20°C as received.
Stability:	Stable for 12 months from date of receipt.
Gene Name:	forkhead box O3
Database Link:	NP_001446 Entrez Gene 56484 Mouse Entrez Gene 294515 Rat Entrez Gene 2309 Human O43524
Background:	This gene belongs to the forkhead family of transcription factors which are characterized by a distinct forkhead domain. This gene likely functions as a trigger for apoptosis through expression of genes necessary for cell death. Translocation of this gene with the MLL gene is associated with secondary acute leukemia. Alternatively spliced transcript variants encoding the same protein have been observed. [provided by RefSeq, Jul 2008]
Synonyms:	AF6q21; FKHRL1; FKHRL1P2; FOXO2; FOXO3A


[View online »](#)

Protein Families: Druggable Genome, Transcription Factors

Protein Pathways: Chemokine signaling pathway, Endometrial cancer, Neurotrophin signaling pathway, Non-small cell lung cancer

Product images:



HEK293T cells were transfected with the pCMV6-ENTRY control (Left lane) or pCMV6-ENTRY FOXO3 ([RC202894], Right lane) cDNA for 48 hrs and lysed. Equivalent amounts of cell lysates (5 ug per lane) were separated by SDS-PAGE and immunoblotted with anti-FOXO3 (1:500).