

## Product datasheet for **TA809453AM**

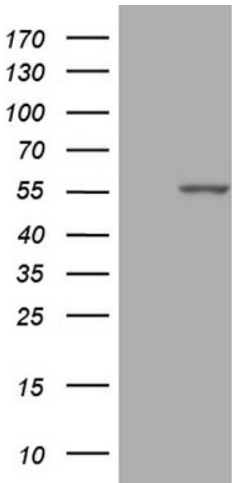
### **C14orf50 (PPP1R36) Mouse Monoclonal Antibody (Biotin conjugated) [Clone ID: OTI3B9]**

#### **Product data:**

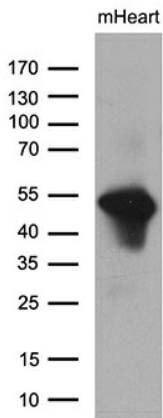
Product Type:	Primary Antibodies
Clone Name:	OTI3B9
Applications:	WB
Recommended Dilution:	WB 1:500~2000
Reactivity:	Human
Host:	Mouse
Isotype:	IgG1
Clonality:	Monoclonal
Immunogen:	Full length human recombinant protein of human PPP1R36(NP_758953) produced in E.coli.
Formulation:	PBS (pH 7.3) containing 1% BSA, 50% glycerol and 0.02% sodium azide.
Concentration:	0.5 mg/ml
Purification:	Purified from mouse ascites fluids or tissue culture supernatant by affinity chromatography (protein A/G)
Conjugation:	Biotin
Storage:	Store at -20°C as received.
Stability:	Stable for 12 months from date of receipt.
Predicted Protein Size:	49.3 kDa
Gene Name:	protein phosphatase 1 regulatory subunit 36
Database Link:	<a href="#">NP_758953</a> <a href="#">Entrez Gene 145376 Human</a> <a href="#">Q96LQ0</a>
Synonyms:	C14orf50

[View online »](#)

**Product images:**



HEK293T cells were transfected with the pCMV6-ENTRY control (Left lane) or pCMV6-ENTRY PPP1R36 [RC209604], Right lane) cDNA for 48 hrs and lysed. Equivalent amounts of cell lysates (5 ug per lane) were separated by SDS-PAGE and immunoblotted with anti-PPP1R36 (1:2000). Positive lysates [LY406731] (100ug) and [LC406731] (20ug) can be purchased separately from OriGene.



Western blot analysis of extracts (35ug) from mouse heart tissue lysate by using anti-PPP1R36 monoclonal antibody (1:500).