

Product datasheet for **TA809451AM**

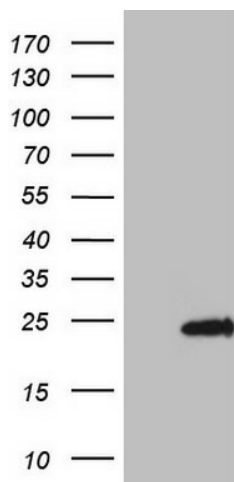
OPA3 Mouse Monoclonal Antibody (Biotin conjugated) [Clone ID: OTI2F5]

Product data:

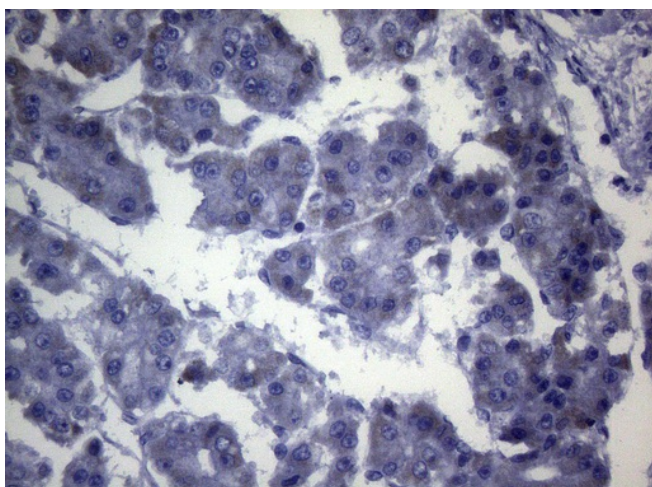
Product Type:	Primary Antibodies
Clone Name:	OTI2F5
Applications:	IHC, WB
Recommended Dilution:	WB 1:2000, IHC 1:150
Reactivity:	Human
Host:	Mouse
Isotype:	IgG1
Clonality:	Monoclonal
Immunogen:	Full length human recombinant protein of human OPA3(NP_079412) produced in E.coli.
Formulation:	PBS (pH 7.3) containing 1% BSA, 50% glycerol and 0.02% sodium azide.
Concentration:	0.5 mg/ml
Purification:	Purified from mouse ascites fluids or tissue culture supernatant by affinity chromatography (protein A/G)
Conjugation:	Biotin
Storage:	Store at -20°C as received.
Stability:	Stable for 12 months from date of receipt.
Gene Name:	optic atrophy 3 (autosomal recessive, with chorea and spastic paraplegia)
Database Link:	NP_079412 Entrez Gene 80207 Human Q9H6K4
Background:	The mouse ortholog of this protein co-purifies with the mitochondrial inner membrane. Mutations in this gene have been shown to result in 3-methylglutaconic aciduria type III and autosomal dominant optic atrophy and cataract. Multiple transcript variants encoding different isoforms have been found for this gene. [provided by RefSeq, Oct 2009]
Synonyms:	MGA3



[View online »](#)

Product images:

HEK293T cells were transfected with the pCMV6-ENTRY control (Left lane) or pCMV6-ENTRY OPA3 ([RC202959], Right lane) cDNA for 48 hrs and lysed. Equivalent amounts of cell lysates (5 ug per lane) were separated by SDS-PAGE and immunoblotted with anti-OPA3 (1:2000). Positive lysates [LY410876] (100ug) and [LC410876] (20ug) can be purchased separately from OriGene.



Immunohistochemical staining of paraffin-embedded Carcinoma of Human liver tissue using anti-OPA3 mouse monoclonal antibody. (Heat-induced epitope retrieval by 1mM EDTA in 10mM Tris buffer (pH8.5) at 120°C for 3min, [TA809451]) (1:150)