

## Product datasheet for **TA809442**

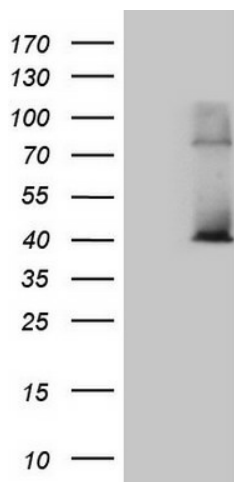
### **POLR3H Mouse Monoclonal Antibody [Clone ID: OTI5A12]**

#### **Product data:**

Product Type:	Primary Antibodies
Clone Name:	OTI5A12
Applications:	WB
Recommended Dilution:	WB 1:2000
Reactivity:	Human, Mouse, Rat
Host:	Mouse
Isotype:	IgG2a
Clonality:	Monoclonal
Immunogen:	Full length human recombinant protein of human POLR3H (NP_612211) produced in E.coli.
Formulation:	PBS (pH 7.3) containing 1% BSA, 50% glycerol and 0.02% sodium azide.
Concentration:	1 mg/ml
Purification:	Purified from mouse ascites fluids or tissue culture supernatant by affinity chromatography (protein A/G)
Conjugation:	Unconjugated
Storage:	Store at -20°C as received.
Stability:	Stable for 12 months from date of receipt.
Gene Name:	polymerase (RNA) III subunit H
Database Link:	<a href="#">NP_612211</a> <a href="#">Entrez Gene 78929 Mouse</a> <a href="#">Entrez Gene 300088 Rat</a> <a href="#">Entrez Gene 171568 Human</a> <a href="#">Q9Y535</a>
Synonyms:	RPC8; RPC22.9
Protein Families:	Transcription Factors
Protein Pathways:	Cytosolic DNA-sensing pathway, Metabolic pathways, Purine metabolism, Pyrimidine metabolism, RNA polymerase



[View online »](#)

**Product images:**

HEK293T cells were transfected with the pCMV6-ENTRY control (Left lane) or pCMV6-ENTRY POLR3H ([RC220534], Right lane) cDNA for 48 hrs and lysed. Equivalent amounts of cell lysates (5 ug per lane) were separated by SDS-PAGE and immunoblotted with anti-POLR3H (1:2000). Positive lysates [LY408616] (100ug) and [LC408616] (20ug) can be purchased separately from OriGene.