

Product datasheet for **TA809431BM**

GALNT10 Mouse Monoclonal Antibody (HRP conjugated) [Clone ID: OTI4F11]

Product data:

Product Type:	Primary Antibodies
Clone Name:	OTI4F11
Applications:	IHC, WB
Recommended Dilution:	WB 1:500~2000, IHC 1:500
Reactivity:	Human, Mouse, Rat
Host:	Mouse
Isotype:	IgG1
Clonality:	Monoclonal
Immunogen:	Human recombinant protein fragment corresponding to amino acids 1-318 of human GALNT10(NP_938080) produced in E.coli.
Formulation:	PBS (pH 7.3) containing 1% BSA, 50% glycerol.
Concentration:	0.5 mg/ml
Purification:	Purified from mouse ascites fluids or tissue culture supernatant by affinity chromatography (protein A/G)
Conjugation:	HRP
Storage:	Store at -20°C as received.
Stability:	Stable for 12 months from date of receipt.
Predicted Protein Size:	68.8 kDa
Gene Name:	polypeptide N-acetylgalactosaminyltransferase 10
Database Link:	NP_938080 Entrez Gene 170501 Rat Entrez Gene 171212 Mouse Entrez Gene 55568 Human Q86SR1
Background:	This gene encodes a member of the GalNAc polypeptide N-acetylgalactosaminyltransferases. These enzymes catalyze the first step in the synthesis of mucin-type oligosaccharides. These proteins transfer GalNAc from UDP-GalNAc to either serine or threonine residues of polypeptide acceptors. The protein encoded by this locus may have increased catalytic activity toward glycosylated peptides compared to activity toward non-glycosylated peptides. [provided by RefSeq, Apr 2010]



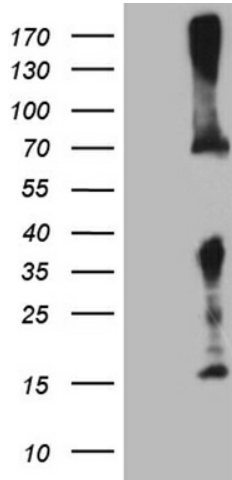
[View online »](#)

Synonyms: GALNACT10; PPGALNACT10; PPGANTASE10

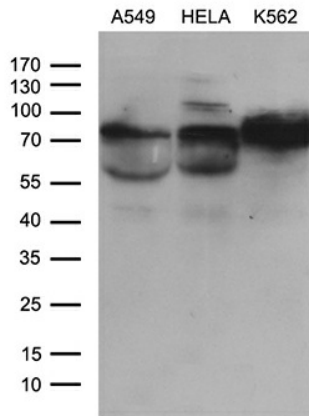
Protein Families: Transmembrane

Protein Pathways: Metabolic pathways, O-Glycan biosynthesis

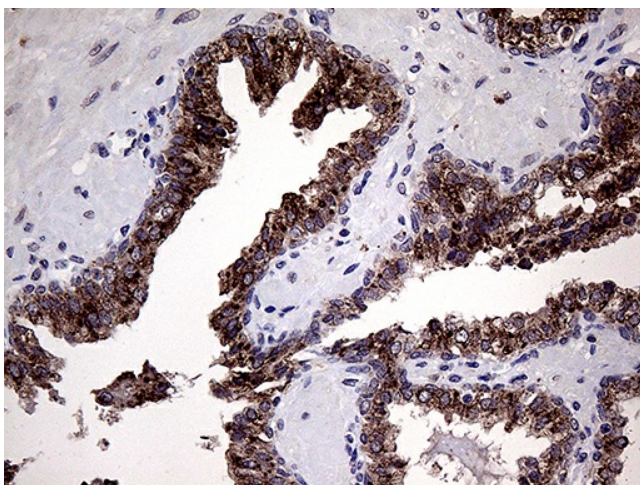
Product images:



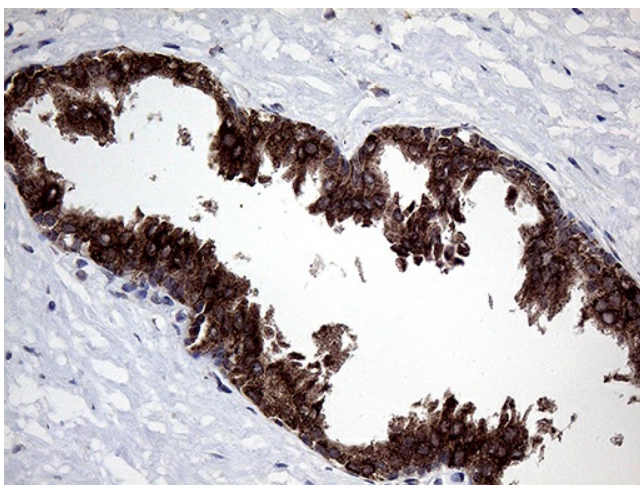
HEK293T cells were transfected with the pCMV6-ENTRY control (Left lane) or pCMV6-ENTRY GALNT10 ([RC223834], Right lane) cDNA for 48 hrs and lysed. Equivalent amounts of cell lysates (5 ug per lane) were separated by SDS-PAGE and immunoblotted with anti-GALNT10 (1:2000). Positive lysates [LY405019] (100ug) and [LC405019] (20ug) can be purchased separately from OriGene.



Western blot analysis of extracts (35ug) from 3 different cell lines by using anti-GALNT10 monoclonal antibody (1:500).



Immunohistochemical staining of paraffin-embedded Human prostate tissue within the normal limits using anti-GALNT10 mouse monoclonal antibody. (Heat-induced epitope retrieval by 1mM EDTA in 10mM Tris buffer (pH8.5) at 120°C for 3min, [TA809431]) (1:500)



Immunohistochemical staining of paraffin-embedded Carcinoma of Human prostate tissue using anti-GALNT10 mouse monoclonal antibody. (Heat-induced epitope retrieval by 1mM EDTA in 10mM Tris buffer (pH8.5) at 120°C for 3min, [TA809431]) (1:500)