

## Product datasheet for **TA809424S**

### ASB13 Mouse Monoclonal Antibody [Clone ID: OTI3F9]

#### Product data:

Product Type:	Primary Antibodies
Clone Name:	OTI3F9
Applications:	WB
Recommended Dilution:	WB 1:500
Reactivity:	Human, Mouse, Rat
Host:	Mouse
Isotype:	IgG1
Clonality:	Monoclonal
Immunogen:	Human recombinant protein fragment corresponding to amino acids 76-278 of human ASB13 (NP_078977) produced in E.coli.
Formulation:	PBS (pH 7.3) containing 1% BSA, 50% glycerol and 0.02% sodium azide.
Concentration:	1 mg/ml
Purification:	Purified from mouse ascites fluids or tissue culture supernatant by affinity chromatography (protein A/G)
Conjugation:	Unconjugated
Storage:	Store at -20°C as received.
Stability:	Stable for 12 months from date of receipt.
Predicted Protein Size:	29.8 kDa
Gene Name:	ankyrin repeat and SOCS box containing 13
Database Link:	<a href="#">NP_078977</a> <a href="#">Entrez Gene 79754 Human</a> <a href="#">Q8W XK3</a>
Background:	The protein encoded by this gene is a member of the ankyrin repeat and SOCS box-containing (ASB) family of proteins. They contain ankyrin repeat sequence and a SOCS box domain. The SOCS box serves to couple suppressor of cytokine signalling (SOCS) proteins and their binding partners with the elongin B and C complex, possibly targeting them for degradation. Multiple alternatively spliced transcript variants, both protein-coding and not protein-coding, have been described for this gene. [provided by RefSeq, Nov 2010]

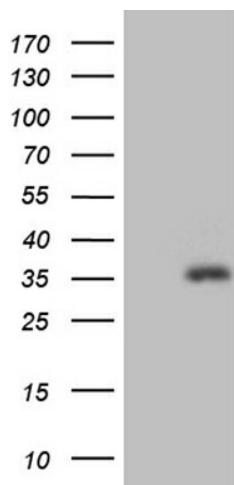


[View online »](#)

Synonyms: FLJ13134; MGC19879

Protein Families: Druggable Genome

### Product images:



HEK293T cells were transfected with the pCMV6-ENTRY control (Left lane) or pCMV6-ENTRY ASB13 ([RC213569], Right lane) cDNA for 48 hrs and lysed. Equivalent amounts of cell lysates (5 ug per lane) were separated by SDS-PAGE and immunoblotted with anti-ASB13 (1:500). Positive lysates [LY411158] (100ug) and [LC411158] (20ug) can be purchased separately from OriGene.