

## Product datasheet for **TA809421AM**

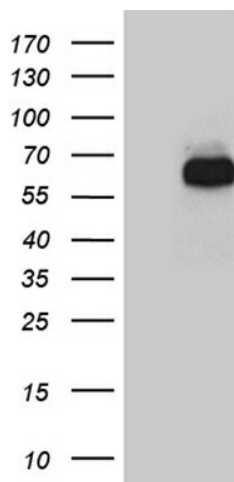
### **RBPJK (RBPJ) Mouse Monoclonal Antibody (Biotin conjugated) [Clone ID: OTI4G10]**

#### **Product data:**

<b>Product Type:</b>	Primary Antibodies
<b>Clone Name:</b>	OTI4G10
<b>Applications:</b>	WB
<b>Recommended Dilution:</b>	WB 1:500
<b>Reactivity:</b>	Human, Mouse, Rat
<b>Host:</b>	Mouse
<b>Isotype:</b>	IgG1
<b>Clonality:</b>	Monoclonal
<b>Immunogen:</b>	Human recombinant protein fragment corresponding to amino acids 1-243 of human RBPJ (NP_005340) produced in E.coli.
<b>Formulation:</b>	PBS (pH 7.3) containing 1% BSA, 50% glycerol and 0.02% sodium azide.
<b>Concentration:</b>	0.5 mg/ml
<b>Purification:</b>	Purified from mouse ascites fluids or tissue culture supernatant by affinity chromatography (protein A/G)
<b>Conjugation:</b>	Biotin
<b>Storage:</b>	Store at -20°C as received.
<b>Stability:</b>	Stable for 12 months from date of receipt.
<b>Predicted Protein Size:</b>	55.5 kDa
<b>Gene Name:</b>	recombination signal binding protein for immunoglobulin kappa J region
<b>Database Link:</b>	<a href="#">NP_005340</a> <a href="#">Entrez Gene 19664 Mouse</a> <a href="#">Entrez Gene 679028 Rat</a> <a href="#">Entrez Gene 3516 Human</a> <a href="#">Q06330</a>
<b>Synonyms:</b>	AOS3; CBF1; csl; IGKJRB; IGKJRB1; KBF2; RBP-J; RBPJK; RBPSUH; SUH
<b>Protein Families:</b>	Transcription Factors
<b>Protein Pathways:</b>	Notch signaling pathway



[View online »](#)

**Product images:**

HEK293T cells were transfected with the pCMV6-ENTRY control (Left lane) or pCMV6-ENTRY RBPJ ([RC218121], Right lane) cDNA for 48 hrs and lysed. Equivalent amounts of cell lysates (5 ug per lane) were separated by SDS-PAGE and immunoblotted with anti-RBPJ (1:500). Positive lysates [LY401647] (100ug) and [LC401647] (20ug) can be purchased separately from OriGene.