

## Product datasheet for **TA809399AM**

### PC4 (SUB1) Mouse Monoclonal Antibody (Biotin conjugated) [Clone ID: OTI4C10]

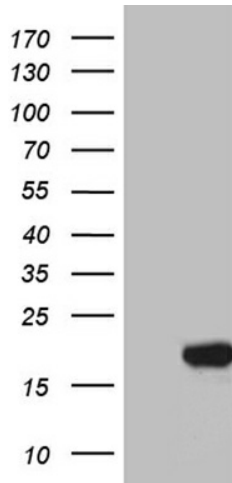
#### Product data:

Product Type:	Primary Antibodies
Clone Name:	OTI4C10
Applications:	WB
Recommended Dilution:	WB 1:500~2000
Reactivity:	Human, Mouse, Rat
Host:	Mouse
Isotype:	IgG1
Clonality:	Monoclonal
Immunogen:	Full length human recombinant protein of human SUB1 (NP_006704) produced in E.coli.
Formulation:	PBS (pH 7.3) containing 1% BSA, 50% glycerol and 0.02% sodium azide.
Concentration:	0.5 mg/ml
Purification:	Purified from mouse ascites fluids or tissue culture supernatant by affinity chromatography (protein A/G)
Conjugation:	Biotin
Storage:	Store at -20°C as received.
Stability:	Stable for 12 months from date of receipt.
Predicted Protein Size:	14.2 kDa
Gene Name:	SUB1 homolog, transcriptional regulator
Database Link:	<a href="#">NP_006704</a> <a href="#">Entrez Gene 10923 Human P53999</a>
Synonyms:	p14; P15; PC4
Protein Families:	Transcription Factors

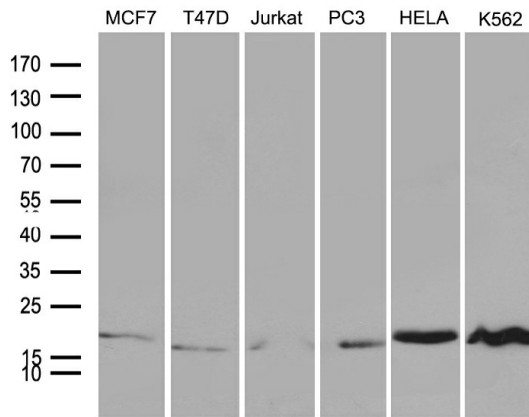


[View online »](#)

**Product images:**



HEK293T cells were transfected with the pCMV6-ENTRY control (Cat# [PS100001], Left lane) or pCMV6-ENTRY SUB1 (Cat# [RC204999], Right lane) cDNA for 48 hrs and lysed. Equivalent amounts of cell lysates (5 ug per lane) were separated by SDS-PAGE and immunoblotted with anti-SUB1 (Cat# [TA809399])(1:2000). Positive lysates [LY402009] (100ug) and [LC402009] (20ug) can be purchased separately from OriGene.



Western blot analysis of extracts (35ug) from 6 different cell lines by using anti-SUB1 monoclonal antibody (1:500).