

Product datasheet for **TA809396M**

GALNT10 Mouse Monoclonal Antibody [Clone ID: OTI2A12]

Product data:

Product Type:	Primary Antibodies
Clone Name:	OTI2A12
Applications:	IHC, WB
Recommended Dilution:	WB 1:2000, IHC 1:500
Reactivity:	Human, Mouse, Rat
Host:	Mouse
Isotype:	IgG1
Clonality:	Monoclonal
Immunogen:	Human recombinant protein fragment corresponding to amino acids 1-318 of human GALNT10(NP_938080) produced in E.coli.
Formulation:	PBS (pH 7.3) containing 1% BSA, 50% glycerol and 0.02% sodium azide.
Concentration:	1 mg/ml
Purification:	Purified from mouse ascites fluids or tissue culture supernatant by affinity chromatography (protein A/G)
Conjugation:	Unconjugated
Storage:	Store at -20°C as received.
Stability:	Stable for 12 months from date of receipt.
Predicted Protein Size:	68.8 kDa
Gene Name:	polypeptide N-acetylgalactosaminyltransferase 10
Database Link:	NP_938080 Entrez Gene 170501 Rat Entrez Gene 171212 Mouse Entrez Gene 55568 Human Q86SR1
Background:	This gene encodes a member of the GalNAc polypeptide N-acetylgalactosaminyltransferases. These enzymes catalyze the first step in the synthesis of mucin-type oligosaccharides. These proteins transfer GalNAc from UDP-GalNAc to either serine or threonine residues of polypeptide acceptors. The protein encoded by this locus may have increased catalytic activity toward glycosylated peptides compared to activity toward non-glycosylated peptides. [provided by RefSeq, Apr 2010]



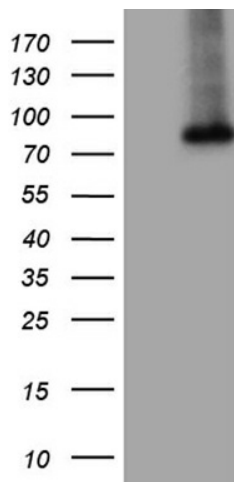
[View online »](#)

Synonyms: GALNACT10; PPGALNACT10; PPGANTASE10

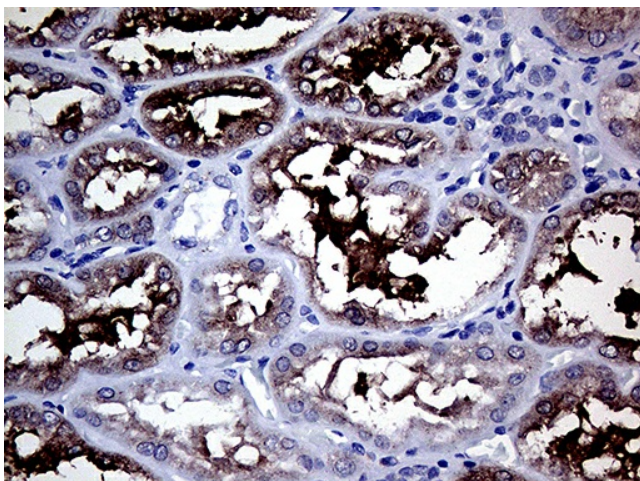
Protein Families: Transmembrane

Protein Pathways: Metabolic pathways, O-Glycan biosynthesis

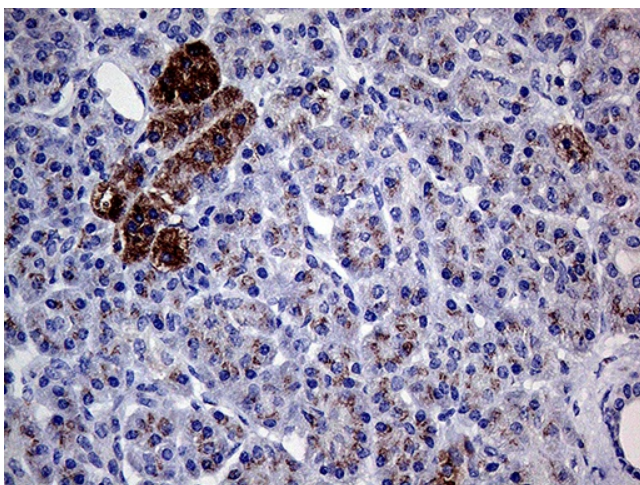
Product images:



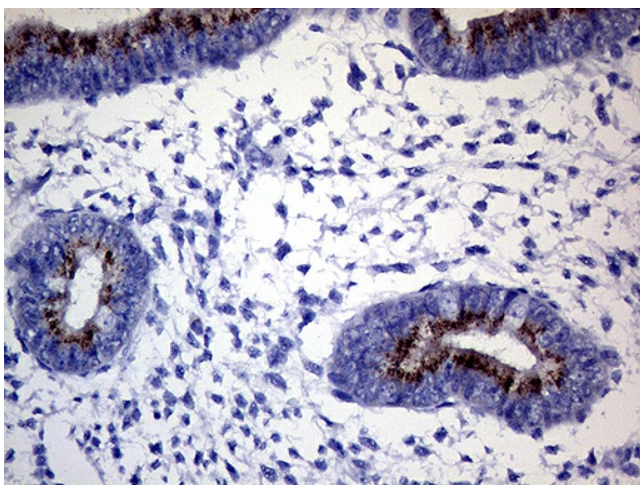
HEK293T cells were transfected with the pCMV6-ENTRY control (Cat# [PS100001], Left lane) or pCMV6-ENTRY GALNT10 (Cat# [RC223834], Right lane) cDNA for 48 hrs and lysed. Equivalent amounts of cell lysates (5 ug per lane) were separated by SDS-PAGE and immunoblotted with anti-GALNT10 (Cat# [TA809396])(1:2000). Positive lysates [LY405019] (100ug) and [LC405019] (20ug) can be purchased separately from OriGene.



Immunohistochemical staining of paraffin-embedded Human Kidney tissue within the normal limits using anti-GALNT10 mouse monoclonal antibody. Heat-induced epitope retrieval by EDTA solution buffer pH 8.0 at 120°C for 3 min.



Immunohistochemical staining of paraffin-embedded Human pancreas tissue within the normal limits using anti-GALNT10 mouse monoclonal antibody. Heat-induced epitope retrieval by EDTA solution buffer pH 8.0 at 120°C for 3 min.



Immunohistochemical staining of paraffin-embedded Human endometrium tissue within the normal limits using anti-GALNT10 mouse monoclonal antibody. Heat-induced epitope retrieval by EDTA solution buffer pH 8.0 at 120°C for 3 min.