

## Product datasheet for **TA809393**

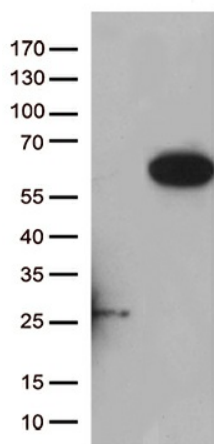
### **PAMCI (RASSF9) Mouse Monoclonal Antibody [Clone ID: OTI5E5]**

#### **Product data:**

Product Type:	Primary Antibodies
Clone Name:	OTI5E5
Applications:	WB
Recommended Dilution:	WB 1:500
Reactivity:	Human, Mouse, Rat
Host:	Mouse
Isotype:	IgG1
Clonality:	Monoclonal
Immunogen:	Human recombinant protein fragment corresponding to amino acids 1-232 of human RASSF9 (NP_005438) produced in E.coli.
Formulation:	PBS (pH 7.3) containing 1% BSA, 50% glycerol and 0.02% sodium azide.
Concentration:	1 mg/ml
Purification:	Purified from mouse ascites fluids or tissue culture supernatant by affinity chromatography (protein A/G)
Conjugation:	Unconjugated
Storage:	Store at -20°C as received.
Stability:	Stable for 12 months from date of receipt.
Predicted Protein Size:	49.8 kDa
Gene Name:	Ras association domain family member 9
Database Link:	<a href="#">NP_005438</a> <a href="#">Entrez Gene 65053 Rat</a> <a href="#">Entrez Gene 237504 Mouse</a> <a href="#">Entrez Gene 9182 Human</a> <a href="#">O75901</a>
Background:	The protein encoded by this gene localizes to perinuclear endosomes. This protein associates with peptidylglycine alpha-amidating monooxygenase, and may be involved with the trafficking of this enzyme through secretory or endosomal pathways. [provided by RefSeq, Jul 2008]
Synonyms:	P-CIP1; PAMCI; PCIP1



[View online »](#)

**Product images:**

HEK293T cells were transfected with the pCMV6-ENTRY control (Cat# [PS100001], Left lane) or pCMV6-ENTRY RASSF9 (Cat# [RC206446], Right lane) cDNA for 48 hrs and lysed. Equivalent amounts of cell lysates (5 ug per lane) were separated by SDS-PAGE and immunoblotted with anti-RASSF9 (Cat# TA809393)(1:500). Positive lysates [LY417288] (100ug) and [LC417288] (20ug) can be purchased separately from OriGene.