

Product datasheet for **TA809380M**

RAB23 Mouse Monoclonal Antibody [Clone ID: OTI2A8]

Product data:

Product Type:	Primary Antibodies
Clone Name:	OTI2A8
Applications:	IHC, WB
Recommended Dilution:	WB 1:500~2000, IHC 1:2000
Reactivity:	Human, Mouse, Rat
Host:	Mouse
Isotype:	IgG2b
Clonality:	Monoclonal
Immunogen:	Human recombinant protein fragment corresponding to amino acids 1-234 of human RAB23 (NP_899050) produced in E.coli.
Formulation:	PBS (pH 7.3) containing 1% BSA, 50% glycerol and 0.02% sodium azide.
Concentration:	1 mg/ml
Purification:	Purified from mouse ascites fluids or tissue culture supernatant by affinity chromatography (protein A/G)
Conjugation:	Unconjugated
Storage:	Store at -20°C as received.
Stability:	Stable for 12 months from date of receipt.
Predicted Protein Size:	26.5 kDa
Gene Name:	RAB23, member RAS oncogene family
Database Link:	NP_899050 Entrez Gene 19335 Mouse Entrez Gene 367242 Rat Entrez Gene 51715 Human Q9ULC3
Background:	This gene encodes a small GTPase of the Ras superfamily. Rab proteins are involved in the regulation of diverse cellular functions associated with intracellular membrane trafficking, including autophagy and immune response to bacterial infection. The encoded protein may play a role in central nervous system development by antagonizing sonic hedgehog signaling. Disruption of this gene has been implicated in Carpenter syndrome as well as cancer. Alternative splicing results in multiple transcript variants. [provided by RefSeq, Jul 2013]

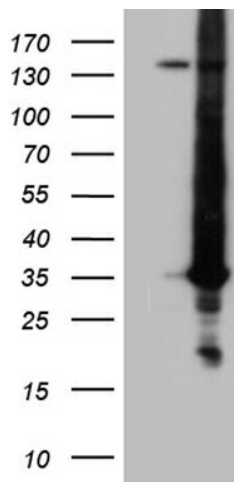

[View online »](#)

Synonyms: HSPC137

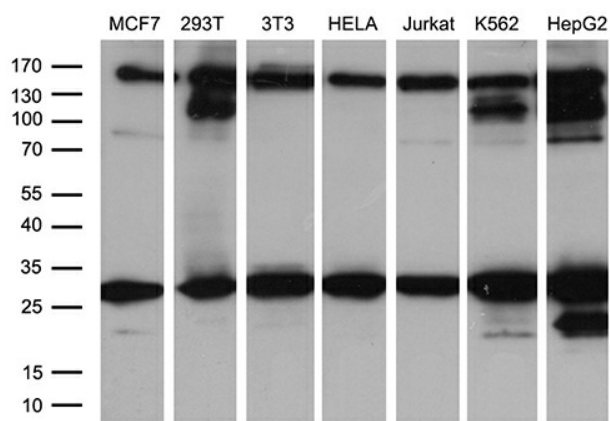
Protein Families: Druggable Genome

Protein Pathways: Hedgehog signaling pathway

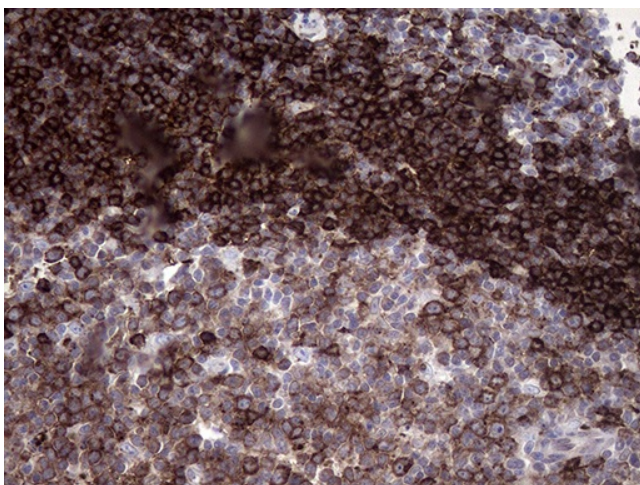
Product images:



HEK293T cells were transfected with the pCMV6-ENTRY control (Cat# [PS100001], Left lane) or pCMV6-ENTRY RAB23 (Cat# [RC221508], Right lane) cDNA for 48 hrs and lysed. Equivalent amounts of cell lysates (5 ug per lane) were separated by SDS-PAGE and immunoblotted with anti-RAB23 (Cat# [TA809380])(1:2000). Positive lysates [LY405187] (100ug) and [LC405187] (20ug) can be purchased separately from OriGene.



Western blot analysis of extracts (35ug) from 7 different cell lines by using anti-RAB23 monoclonal antibody (1:500).



Immunohistochemical staining of paraffin-embedded Human lymph node tissue within the normal limits using anti-RAB23 mouse monoclonal antibody. Heat-induced epitope retrieval by EDTA solution buffer pH 8.0 at 120°C for 3 min.