

## Product datasheet for **TA809373BM**

### Eph receptor A6 (EPHA6) Mouse Monoclonal Antibody (HRP conjugated) [Clone ID: OTI5B9]

#### Product data:

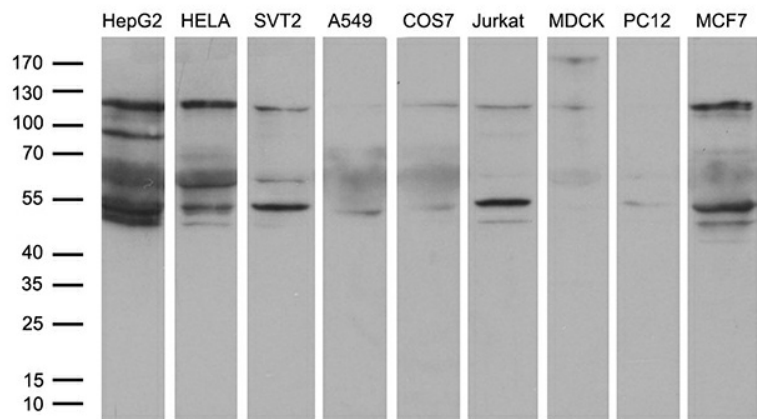
Product Type:	Primary Antibodies
Clone Name:	OTI5B9
Applications:	WB
Recommended Dilution:	WB 1:500
Reactivity:	Human, Mouse, Rat
Host:	Mouse
Isotype:	IgG2b
Clonality:	Monoclonal
Immunogen:	Human recombinant protein fragment corresponding to amino acids 225-481 of human EPHA6 (NP_001073917) produced in E.coli.
Formulation:	PBS (pH 7.3) containing 1% BSA, 50% glycerol.
Concentration:	0.5 mg/ml
Purification:	Purified from mouse ascites fluids or tissue culture supernatant by affinity chromatography (protein A/G)
Conjugation:	HRP
Storage:	Store at -20°C as received.
Stability:	Stable for 12 months from date of receipt.
Predicted Protein Size:	126.4 kDa
Gene Name:	EPH receptor A6
Database Link:	<a href="#">NP_001073917</a> <a href="#">Entrez Gene 13840 Mouse</a> <a href="#">Entrez Gene 29202 Rat</a> <a href="#">Entrez Gene 285220 Human</a> <a href="#">Q9UF33</a>
Background:	Receptor tyrosine kinase which binds promiscuously GPI-anchored ephrin-A family ligands residing on adjacent cells, leading to contact-dependent bidirectional signaling into neighboring cells. The signaling pathway downstream of the receptor is referred to as forward signaling while the signaling pathway downstream of the ephrin ligand is referred to as reverse signaling. [UniProtKB/Swiss-Prot Function]



[View online »](#)

**Synonyms:** EHK-2; EHK2; EK12; EPA6; HEK12; PRO57066  
**Protein Families:** Druggable Genome, Protein Kinase, Transmembrane  
**Protein Pathways:** Axon guidance

**Product images:**



Western blot analysis of extracts (35ug) from 9 different cell lines by using anti-EPHA6 monoclonal antibody (HepG2: human; HeLa: human; SVT2: mouse; A549: human; COS7: monkey; Jurkat: human; MDCK: canine; PC12: rat; MCF7: human) (1:500).