

Product datasheet for **TA809367AM**

THOC3 Mouse Monoclonal Antibody (Biotin conjugated) [Clone ID: OTI4H6]

Product data:

Product Type:	Primary Antibodies
Clone Name:	OTI4H6
Applications:	IHC, WB
Recommended Dilution:	WB 1:500~2000, IHC 1:500
Reactivity:	Human, Mouse, Rat
Host:	Mouse
Isotype:	IgG1
Clonality:	Monoclonal
Immunogen:	Human recombinant protein fragment corresponding to amino acids 15-237 of human THOC3(NP_115737) produced in E.coli.
Formulation:	PBS (pH 7.3) containing 1% BSA, 50% glycerol and 0.02% sodium azide.
Concentration:	0.5 mg/ml
Purification:	Purified from mouse ascites fluids or tissue culture supernatant by affinity chromatography (protein A/G)
Conjugation:	Biotin
Storage:	Store at -20°C as received.
Stability:	Stable for 12 months from date of receipt.
Predicted Protein Size:	38.6 kDa
Gene Name:	THO complex 3
Database Link:	NP_115737 Entrez Gene 73666 Mouse Entrez Gene 290519 Rat Entrez Gene 84321 Human Q96J01



[View online »](#)

Background:

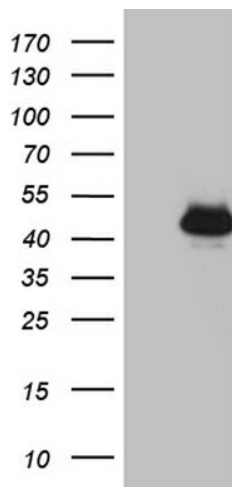
This gene encodes a component of the nuclear THO transcription elongation complex, which is part of the larger transcription export (TREX) complex that couples messenger RNA processing and export. In humans, the transcription export complex is recruited to the 5'-end of messenger RNAs in a splicing- and cap-dependent manner. Studies of a related complex in mouse suggest that the metazoan transcription export complex is involved in cell differentiation and development. A pseudogene of this gene has been defined on chromosome 5. [provided by RefSeq, May 2013]

Synonyms:

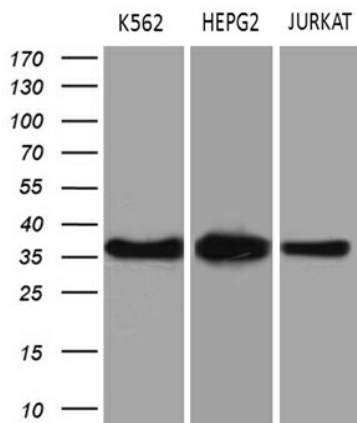
hTREX45; THO3

Protein Pathways:

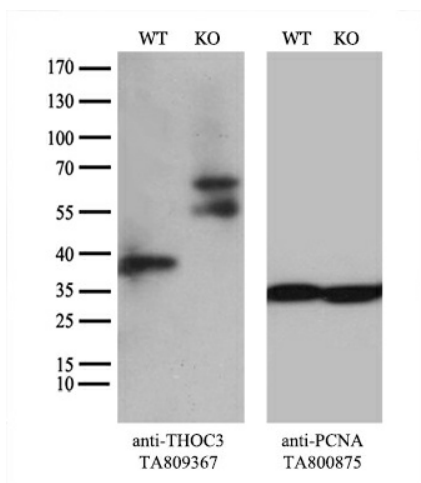
Spliceosome

Product images:


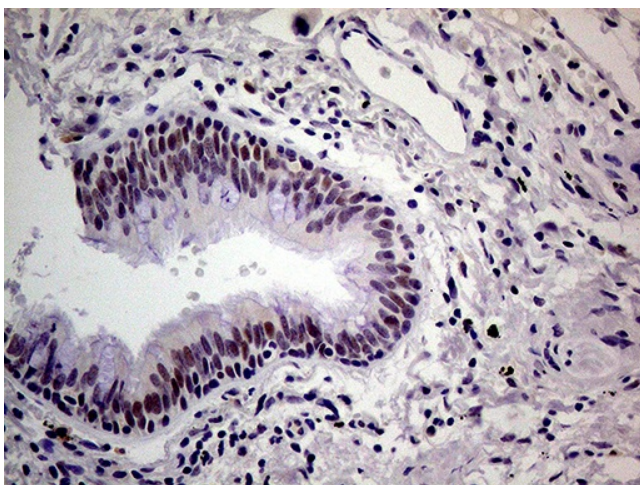
HEK293T cells were transfected with the pCMV6-ENTRY control (Cat# [PS100001], Left lane) or pCMV6-ENTRY THOC3 (Cat# [RC201698], Right lane) cDNA for 48 hrs and lysed. Equivalent amounts of cell lysates (5 ug per lane) were separated by SDS-PAGE and immunoblotted with anti-THOC3 (Cat# [TA809367])(1:2000). Positive lysates [LY403157] (100ug) and [LC403157] (20ug) can be purchased separately from OriGene.



Western blot analysis of extracts (35ug) from 3 different cell lines by using anti-THOC3 monoclonal antibody (1:500).



Equivalent amounts of cell lysates (10 ug per lane) of wild-type HeLa cells (WT, Cat# LC810HELA) and THOC3-Knockout HeLa cells (KO, Cat# [LC833215]) were separated by SDS-PAGE and immunoblotted with anti-THOC3 monoclonal antibody [TA809367] (1:200). Then the blotted membrane was stripped and reprobed with anti-PCNA antibody as a loading control.



Immunohistochemical staining of paraffin-embedded Human lung tissue within the normal limits using anti-THOC3 mouse monoclonal antibody. (Heat-induced epitope retrieval by 1mM EDTA in 10mM Tris buffer (pH8.5) at 120°C for 3min, [TA809367]) (1:500)