

## Product datasheet for **TA809366S**

### **TRAFD1 Mouse Monoclonal Antibody [Clone ID: OTI3E8]**

#### **Product data:**

Product Type:	Primary Antibodies
Clone Name:	OTI3E8
Applications:	WB
Recommended Dilution:	WB 1:2000
Reactivity:	Human
Host:	Mouse
Isotype:	IgG1
Clonality:	Monoclonal
Immunogen:	Human recombinant protein fragment corresponding to amino acids 308-582 of human TRAFD1(NP_006691) produced in E.coli.
Formulation:	PBS (pH 7.3) containing 1% BSA, 50% glycerol and 0.02% sodium azide.
Concentration:	1 mg/ml
Purification:	Purified from mouse ascites fluids or tissue culture supernatant by affinity chromatography (protein A/G)
Conjugation:	Unconjugated
Storage:	Store at -20°C as received.
Stability:	Stable for 12 months from date of receipt.
Predicted Protein Size:	64.7 kDa
Gene Name:	TRAF-type zinc finger domain containing 1
Database Link:	<a href="#">NP_006691</a> <a href="#">Entrez Gene 10906 Human</a> <a href="#">O14545</a>



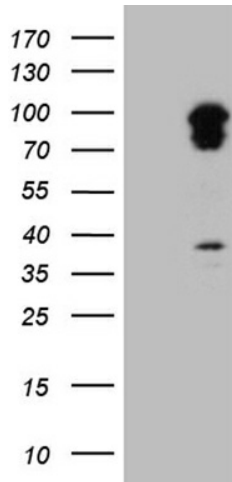
[View online »](#)

**Background:**

The innate immune system confers host defense against viral and microbial infection, and TRAFD1 is a negative feedback regulator that controls excessive immune responses (Sanada et al., 2008 [PubMed 18849341]). [supplied by OMIM, Dec 2009]. Transcript Variant: This variant (1) represents the longer transcript. Variants 1 and 2 both encode the same protein. ##Evidence-Data-START## Transcript exon combination :: AK122620.1 [ECO:0000332] RNAseq introns :: single sample supports all introns ERS025084, ERS025086 [ECO:0000348] ##Evidence-Data-END## COMPLETENESS: complete on the 3' end.

**Synonyms:**

FLN29

**Product images:**

HEK293T cells were transfected with the pCMV6-ENTRY control (Cat# [PS100001], Left lane) or pCMV6-ENTRY TRAFD1 (Cat# [RC200265], Right lane) cDNA for 48 hrs and lysed. Equivalent amounts of cell lysates (5 ug per lane) were separated by SDS-PAGE and immunoblotted with anti-TRAFD1 (Cat# [TA809366])(1:2000). Positive lysates [LY402005] (100ug) and [LC402005] (20ug) can be purchased separately from OriGene.