

Product datasheet for **TA809360AM**

HABP2 Mouse Monoclonal Antibody (Biotin conjugated) [Clone ID: OTI2B5]

Product data:

Product Type:	Primary Antibodies
Clone Name:	OTI2B5
Applications:	WB
Recommended Dilution:	WB 1:500
Reactivity:	Human
Host:	Mouse
Isotype:	IgG1
Clonality:	Monoclonal
Immunogen:	Human recombinant protein fragment corresponding to amino acids 33-330 of human HABP2(NP_004123) produced in E.coli.
Formulation:	PBS (pH 7.3) containing 1% BSA, 50% glycerol and 0.02% sodium azide.
Concentration:	0.5 mg/ml
Purification:	Purified from mouse ascites fluids or tissue culture supernatant by affinity chromatography (protein A/G)
Conjugation:	Biotin
Storage:	Store at -20°C as received.
Stability:	Stable for 12 months from date of receipt.
Predicted Protein Size:	60.2 kDa
Gene Name:	hyaluronan binding protein 2
Database Link:	NP_004123 Entrez Gene 3026 Human Q14520



[View online »](#)

Background:

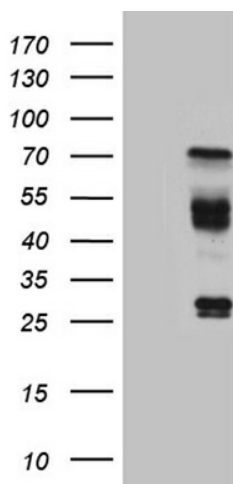
The protein encoded by this gene is an extracellular serine protease that binds hyaluronic acid and is involved in cell adhesion. The encoded protein is synthesized as a single chain, but then undergoes an autoproteolytic event to form the functional heterodimer. Further autoproteolysis leads to smaller, inactive peptides. This protease is known to cleave urinary plasminogen activator, coagulation factor VII, and the alpha and beta chains of fibrinogen, but not prothrombin, plasminogen, or the gamma chain of fibrinogen. Two transcript variants encoding different isoforms have been found for this gene. [provided by RefSeq, Apr 2010]

Synonyms:

FSAP; HABP; HGFAL; NMTC5; PHBP

Protein Families:

Druggable Genome, Protease, Secreted Protein

Product images:

HEK293T cells were transfected with the pCMV6-ENTRY control (Left lane) or pCMV6-ENTRY HABP2 ([RC206545], Right lane) cDNA for 48 hrs and lysed. Equivalent amounts of cell lysates (5 ug per lane) were separated by SDS-PAGE and immunoblotted with anti-HABP2 (1:500). Positive lysates [LY401333] (100ug) and [LC401333] (20ug) can be purchased separately from OriGene.