

## Product datasheet for **TA809358BM**

### USP16 Mouse Monoclonal Antibody (HRP conjugated) [Clone ID: OTI1H8]

#### Product data:

Product Type:	Primary Antibodies
Clone Name:	OTI1H8
Applications:	WB
Recommended Dilution:	WB 1:2000
Reactivity:	Human
Host:	Mouse
Isotype:	IgG1
Clonality:	Monoclonal
Immunogen:	Human recombinant protein fragment corresponding to amino acids 1-355 of human USP16(NP_001001992) produced in E.coli.
Formulation:	PBS (pH 7.3) containing 1% BSA, 50% glycerol.
Concentration:	0.5 mg/ml
Purification:	Purified from mouse ascites fluids or tissue culture supernatant by affinity chromatography (protein A/G)
Conjugation:	HRP
Storage:	Store at -20°C as received.
Stability:	Stable for 12 months from date of receipt.
Predicted Protein Size:	93.3 kDa
Gene Name:	ubiquitin specific peptidase 16
Database Link:	<a href="#">NP_001001992</a> <a href="#">Entrez Gene 10600 Human</a> <a href="#">Q9Y5T5</a>
Background:	This gene encodes a deubiquitinating enzyme that is phosphorylated at the onset of mitosis and then dephosphorylated at the metaphase/anaphase transition. It can deubiquitinate H2A, one of two major ubiquitinated proteins of chromatin, in vitro and a mutant form of the protein was shown to block cell division. Alternate transcriptional splice variants, encoding different isoforms, have been characterized. [provided by RefSeq, Jul 2008]

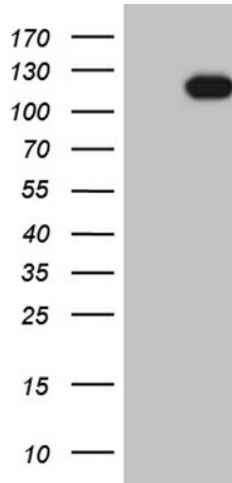


[View online »](#)

Synonyms: UBP-M; UBPM

Protein Families: Protease

### Product images:



HEK293T cells were transfected with the pCMV6-ENTRY control (Cat# [PS100001], Left lane) or pCMV6-ENTRY USP16 (Cat# [RC205268], Right lane) cDNA for 48 hrs and lysed. Equivalent amounts of cell lysates (5 ug per lane) were separated by SDS-PAGE and immunoblotted with anti-USP16 (Cat# [TA809358])(1:2000). Positive lysates [LY424308] (100ug) and [LC424308] (20ug) can be purchased separately from OriGene.