

Product datasheet for **TA809357AM**

TBX20 Mouse Monoclonal Antibody (Biotin conjugated) [Clone ID: OTI6C9]

Product data:

Product Type:	Primary Antibodies
Clone Name:	OTI6C9
Applications:	WB
Recommended Dilution:	WB 1:2000
Reactivity:	Human, Mouse
Host:	Mouse
Isotype:	IgG1
Clonality:	Monoclonal
Immunogen:	Human recombinant protein fragment corresponding to amino acids 1-340 of human TBX20(NP_001071121) produced in E.coli.
Formulation:	PBS (pH 7.3) containing 1% BSA, 50% glycerol and 0.02% sodium azide.
Concentration:	0.5 mg/ml
Purification:	Purified from mouse ascites fluids or tissue culture supernatant by affinity chromatography (protein A/G)
Conjugation:	Biotin
Storage:	Store at -20°C as received.
Stability:	Stable for 12 months from date of receipt.
Predicted Protein Size:	49.1 kDa
Gene Name:	T-box 20
Database Link:	NP_001071121 Entrez Gene 57246 Mouse Entrez Gene 57057 Human Q9UMR3
Background:	This gene encodes a T-box family member. The T-box family members share a common DNA binding domain, termed the T-box, and they are transcription factors involved in the regulation of developmental processes. This gene is essential for heart development. Mutations in this gene are associated with diverse cardiac pathologies, including defects in septation, valvulogenesis and cardiomyopathy. Alternatively spliced transcript variants encoding different isoforms have been found for this gene. [provided by RefSeq, Oct 2009]

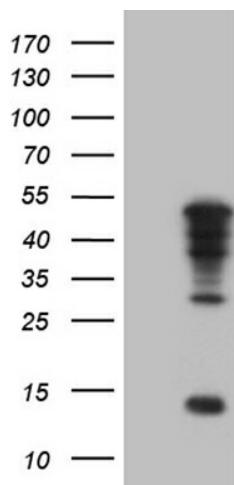


[View online »](#)

Synonyms: ASD4

Protein Families: Transcription Factors

Product images:



HEK293T cells were transfected with the pCMV6-ENTRY control (Cat# [PS100001], Left lane) or pCMV6-ENTRY TBX20 (Cat# [RC212412], Right lane) cDNA for 48 hrs and lysed. Equivalent amounts of cell lysates (5 ug per lane) were separated by SDS-PAGE and immunoblotted with anti-TBX20 (Cat# [TA809357])(1:2000). Positive lysates [LY421469] (100ug) and [LC421469] (20ug) can be purchased separately from OriGene.